

# About ORIX

## Group Companies (As of March 31, 2016)

Segment	Principal Business	Established (Acquired)	Direct / Indirect Investment
<b>Corporate Financial Services</b>			
ORIX Corporation Tokyo Sales Headquarters, Kinki Sales Headquarters, District Sales Headquarters, OQL Business and Sales Promotion Headquarters	Leasing, Lending, Other Financial Services		
NS Lease Co., Ltd.	Leasing, Lending, Other Financial Services	(Jul. 2002)	100%
ORIX Tokushima Corporation	Leasing, Other Financial Services	(Oct. 2005)	95%
Tsukuba Lease Corporation	Leasing	(Jun. 2010)	95%
Kyuko-Lease Inc.	Leasing, Other Financial Services	(Jan. 2012)	90%
FREEILL CORPORATION	Medical Equipment Rental	(May 2013)	100%
Yayoi Co., Ltd.	Development, Marketing, and Support of Business Management Software and Related Services	(Dec. 2014)	99%
ORIX Yatsugatake Farm Co., Ltd.	Production and Sales of Hydroponic Vegetables	Apr. 2015	97%
<b>Maintenance Leasing</b>			
ORIX Auto Corporation	Automobile Leasing, Rental, Car Sharing and Sales of Used Automobiles	Jun. 1973	100%
ORIX Rentec Corporation	Rental and Leasing of Test and Measurement Instruments and IT-related Equipment	Sep. 1976	100%
ORIX Rentec (Korea) Corporation (South Korea)	Rental and Leasing of Test and Measurement Instruments and IT-related Equipment	Apr. 2001	100%
Beijing Oriental Jicheng Co., Ltd. (China)	Rental and Sales of Precision Measuring Equipment	(Feb. 2006)	34%
<b>Real Estate</b>			
ORIX Corporation Real Estate Headquarters	Real Estate Development and Rental		
ORIX Ichioka Kotsu Kigyo Corporation	Driving School	(Dec. 1986)	100%
ORIX Interior Corporation	Interior Finish Work and Construction Management, Real Estate Rental and Manufacturing and Sales of Interior Furnishings	(Jan. 1987)	100%
BlueWave Corporation	Hotel and Training Facility Management	Aug. 1991	100%
ORIX Real Estate Corporation	Real Estate Development and Rental, Facilities Operation	Mar. 1999	100%
ORIX Asset Management Corporation	Asset Management of J-REIT	Sep. 2000	100%
ORIX Golf Management Corporation	Golf Course Management	(Nov. 2004)	100%
ORIX Living Corporation	Senior Housing Management	Apr. 2005	98%
ORIX Real Estate Investment Advisors Corporation	Real Estate Investment and Advisory Services	Sep. 2007	100%
ORIX Aquarium Corporation	Aquarium Operation	Apr. 2011	100%
ORIX Agriculture Corporation	Production of Vegetables at Plant Factory and their Sales	Feb. 2014	100%
<b>Investment and Operation</b>			
ORIX Corporation Investment and Operation Headquarters	Principal Investment		
ORIX Corporation Energy and Eco Services Business Headquarters	Environment and Energy Business		
ORIX Capital Corporation	Venture Capital	Oct. 1983	100%
ORIX Eco Services Corporation	Trading of Recycled Metals and other Resources, Collection and Transportation of Industrial Waste, and Intermediate Waste Processing	Apr. 1998	100%
ORIX Asset Management & Loan Services Corporation	Loan Servicing	Apr. 1999	100%
ORIX Environmental Resources Management Corporation	Waste Recycling	Sep. 2002	100%
Agatsuma Bio Power Co., Ltd.	Biomass Power Generation	Jan. 2006	100%
ORIX Loan Business Center Corporation	Personal Loan Related Asset Management, Customer Relations	May 2009	99%
ORIX Electric Power Corporation	Provision of Electricity to Condominiums	May 2010	85%
Ubiteq, INC.	Development and Manufacturing of Electronic Equipment and In-Vehicle Devices, Development and Operation of Systems	(Jul. 2010)	59%
ONE Energy Corporation	Trading and Rental of Storage Batteries, Energy Related Services	Mar. 2013	70%
Enovity, Inc. (USA)	Building-related Energy Management Services	(Sep. 2013)	80%
<b>Retail</b>			
ORIX Credit Corporation	Consumer Finance Services	Jun. 1979	100%
ORIX Life Insurance Corporation	Life Insurance	Apr. 1991	100%
ORIX Bank Corporation	Banking	(Apr. 1998)	100%
ORIX Insurance Consulting Corporation	Insurance Agency Services	Oct. 2012	100%
<b>ORIX Headquarter Functions (Not included in Segment Financial Information)</b>			
ORIX Insurance Services Corporation	Insurance Agency Services	Sep. 1976	100%
ORIX Computer Systems Corporation	Software Engineering and Systems Management	Mar. 1984	100%
ORIX Baseball Club Co., Ltd.	Professional Baseball Team Management	(Oct. 1988)	100%
ORIX Management Information Center Corporation	Accounting and Administration Services	Oct. 1999	100%
ORIX Business Center Okinawa Corporation	Business Center, Contact Center	Nov. 1999	100%
ORIX Business Support Corporation	Business Support Services	Apr. 2007	100%
ORIX Wholesale Securities Corporation	Sale of Financial Products	Feb. 2010	100%

Segment	Country (Region)*1	Principal Business	Established (Acquired)	Direct / Indirect Investment
<b>Overseas Business</b>				
ORIX Corporation Global Business and Alternative Investment Headquarters*2	Japan	Administration of Overseas Activities, Alternative Investment		
ORIX Corporation Global Transportation Services Headquarters*2	Japan	Ship-related Services, Aircraft-related Services		
ORIX Corporation East Asia Business Headquarters*2	Japan	Administration of Overseas Activities		
ORIX Maritime Corporation*2	Japan	Ship Charter and Ship Broker Service	Nov. 1977	100%
ORIX Aircraft Corporation*2	Japan	Aircraft Leasing	May 1986	100%
ORIX USA Corporation	USA	Corporate Finance, Investment Banking	Aug. 1981	100%
RED Capital Group	USA	Loan Servicing	(May 2010)	100%
Mariner Investment Group LLC	USA	Fund Operation and Management	(Dec. 2010)	69%
ORIX Brazil Investments and Holdings Limited	Brazil	Equity Investment	Aug. 2012	100%
ORIX Asia Limited	Hong Kong	Leasing, Automobile Leasing, Lending, Banking	Sep. 1971	100%
ORIX Asia Capital Limited	Hong Kong	Equity Investment, Fund Operation and Management, Lending	Jul. 1973	100%
ORIX Taiwan Corporation	Taiwan	Leasing, Installment Loans, Insurance Agency Services	(Feb. 1991)	100%
ORIX Auto Leasing Taiwan Corporation	Taiwan	Automobile Leasing and Rentals	Mar. 1998	100%
ORIX Taiwan Asset Management Company	Taiwan	NPL Investment, Loan Servicing	Nov. 2004	100%
ORIX Capital Korea Corporation	South Korea	Automobile Leasing, Leasing, Lending	Feb. 2004	100%
ORIX Private Equity Korea Corporation	South Korea	Fund Operation and Management	Mar. 2010	100%
ORIX Rentec (Tianjin) Corporation	China	Rental, Leasing, Installment Loans	Aug. 2004	100%
ORIX China Corporation	China	Leasing, Rental	Aug. 2005	97%
CHINA RAILWAY LEASING CO., LTD.	China	Railway-related Leasing	(Jan. 2006)	25%
ORIX (China) Investment Co., Ltd.	China	Leasing, Equity Investment, Other Financial Services	Dec. 2009	100%
Pang Da ORIX Auto Leasing Co., Ltd.	China	Automobile Leasing	May 2012	50%
TenGer Financial Group	Mongolia	Banking, Leasing, Non-Life Insurance	(Oct. 2013)	16%
ORIX Leasing Singapore Limited	Singapore	Leasing, Installment Loans, Lending	Sep. 1972	50%
ORIX Investment and Management Private Limited	Singapore	Equity Investment, Lending	May 1981	100%
ETHOZ Group Ltd.	Singapore	Automobile Leasing and Rentals, Leasing	Sep. 1981	45%
ORIX Rentec (Singapore) Pte. Limited	Singapore	Rental and Leasing of Test and Measurement Instruments and IT-related Equipment	Oct. 1995	100%
ORIX Leasing Malaysia Berhad	Malaysia	Leasing, Lending	Sep. 1973	100%
ORIX Credit Malaysia Sdn. Bhd.	Malaysia	Installment Loans	Jan. 1981	100%
ORIX Car Rentals Sdn. Bhd.	Malaysia	Automobile Rentals	Feb. 1989	35%
ORIX Rentec (Malaysia) Sdn. Bhd.	Malaysia	Rental and Leasing of Test and Measurement Instruments and IT-related Equipment	Nov. 1996	100%
ORIX Auto Leasing Malaysia Sdn. Bhd.	Malaysia	Automobile Leasing	Oct. 2000	100%
ORIX Asset Management Malaysia Sdn. Bhd.	Malaysia	NPL Investment	Jan. 2008	100%
PT. ORIX Indonesia Finance	Indonesia	Leasing, Automobile Leasing	Apr. 1975	85%
PT. Sinar Mitra Sepadan Finance	Indonesia	Used car loans for sole proprietors and individual customers	(Nov. 2015)	85%
ORIX METRO Leasing and Finance Corporation	Philippines	Leasing, Automobile Leasing, Lending	Jun. 1977	39%
ORIX Auto Leasing Philippines Corporation	Philippines	Automobile Leasing	Sep. 1989	40%
Global Business Power Corporation	Philippines	Electric Power Business	(Jun. 2013)	22%
Thai ORIX Leasing Co., Ltd.	Thailand	Leasing, Automobile Leasing and Rentals	Jun. 1978	96%
Indochina Capital Corporation	Vietnam	Fund Operation and Management, Real Estate Development, and Advisory, Investment Banking	(Nov. 2010)	25%
Lanka ORIX Leasing Company PLC	Sri Lanka	Leasing, Automobile Leasing, Installment Loans, Lending	Mar. 1980	30%
ORIX Leasing Pakistan Limited	Pakistan	Leasing, Automobile Leasing	Jul. 1986	49%
INFRASTRUCTURE LEASING & FINANCIAL SERVICES LIMITED	India	Infrastructure Investment, Investment Banking	(Mar. 1993)	23%
ORIX Auto Infrastructure Services Limited	India	Automobile Leasing and Rentals	Mar. 1995	99%
Oman ORIX Leasing Company SAOG	Oman	Leasing, Automobile Leasing	Aug. 1994	18%
ORIX Leasing Egypt SAE	Egypt	Leasing, Automobile Leasing	Jun. 1997	34%
Saudi ORIX Leasing Company	Saudi Arabia	Leasing, Automobile Leasing	Jan. 2001	28%
Al Hail ORIX Finance PSC	UAE	Leasing, Automobile Leasing, Lending	Mar. 2002	38%
SK Leasing JSC	Kazakhstan	Leasing	(Jun. 2005)	40%
The Mediterranean & Gulf Insurance & Reinsurance Company B.S.C.	Bahrain	Non-Life Insurance, Life Insurance, Reinsurance	(Jun. 2013)	25%
ORIX Australia Corporation Limited	Australia	Automobile Leasing and Truck Rentals	Jul. 1986	100%
ORIX New Zealand Limited	New Zealand	Leasing, Automobile Leasing	Dec. 1988	100%
ORIX Aviation Systems Limited	Ireland	Aircraft Leasing, Asset Management, Aircraft-related Technical Services	Mar. 1991	100%
ORIX Polska S.A.	Poland	Leasing, Automobile Leasing	(Oct. 1995)	100%
Robeco Groep N.V.	Netherlands	Asset Management	(Jul. 2013)	90%

Notes: 1. ORIX has offices in other locations not included in the list above. In total, ORIX's business operation currently extends across 37 countries and regions worldwide.

2. ORIX Corporation's Global Business and Alternative Investment Headquarters, Global Transportation Services Headquarters, East Asia Business Headquarters as well as ORIX Maritime Corporation and ORIX Aircraft Corporation, are based in Japan but are engaged in business activities primarily in Asia, Oceania and Europe.

# About ORIX

## Corporate Profile/ Stock Information/ Investor Memo

### Corporate Profile (As of March 31, 2016)

<b>Company Name</b>	ORIX Corporation	<b>Shareholders' Equity</b>	¥2,310,431 million
<b>Established</b>	April 17, 1964	<b>Fiscal Year-End</b>	March 31
<b>Head Office</b>	World Trade Center Bldg., 2-4-1 Hamamatsu-cho, Minato-ku, Tokyo 105-6135, Japan Tel: +81-3-3435-3000	<b>Consolidated Companies</b>	793
		<b>Affiliates</b>	132
		<b>Number of Employees</b>	33,333
		<b>Global Network</b>	2,090 locations in 37 countries and regions worldwide
		<b>Japan</b>	1,418 locations
		<b>Overseas</b>	672 locations

### Stock Information (As of March 31, 2016)

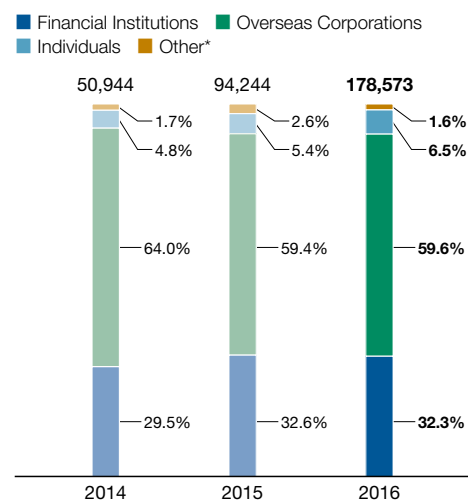
#### Number of Shares

<b>Total Number of Shares Authorized</b>	2,590,000,000 shares
<b>Total Number of Shares Issued and Outstanding</b>	1,324,058,828 shares
<b>Number of Shareholders</b>	178,573

#### Major Shareholders

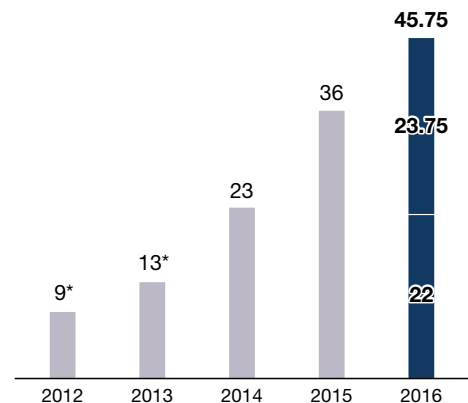
Name	Number of Shares Held (Thousands)	Percentage of Total Shares in Issue (%)
Japan Trustee Services Bank, Ltd. (Trust Account)	118,667	8.96
The Master Trust Bank of Japan, Ltd. (Trust Account)	71,154	5.37
JP Morgan Chase Bank 380055	61,423	4.63
Japan Trustee Services Bank, Ltd. (Trust Account 9)	38,184	2.88
The Chase Manhattan Bank 385036	35,055	2.64
State Street Bank and Trust Company	31,108	2.34
The Bank of New York Mellon SA/NV 10	26,312	1.98
CITIBANK, N.A. -N.Y. AS DEPOSITARY BANK FOR DEPOSITARY SHARE HOLDERS	25,049	1.89
State Street Bank and Trust Company 505225	20,444	1.54
State Street Bank West Client Treaty 505234	19,925	1.50

#### Number of Shareholders / Composition of Shareholders (%)



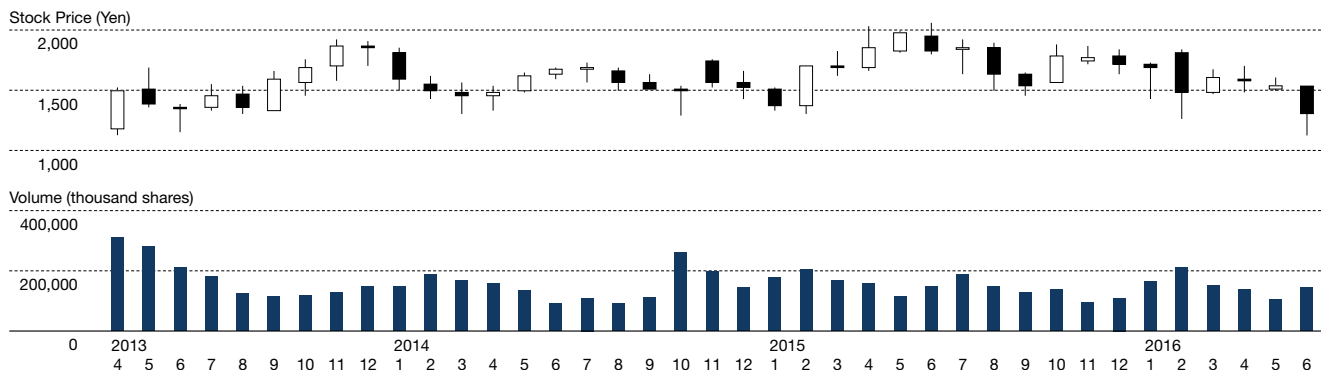
\* Other includes treasury stock.

#### Dividend per Share (Yen)



\* Retrospectively adjusted to reflect the stock split for all periods presented.

## Stock Price and Volume



On April 1, 2013, ORIX split each share of its common stock, which were held by shareholders recorded on the register of shareholders as of March 31, 2013, into ten (10) shares.

● Dividend per share, stock price and volume have been retrospectively adjusted to reflect the stock split for all periods presented.

## Investor Memo (As of July 1, 2016)

### Transfer Agent for Common Shares

Mitsubishi UFJ Trust and Banking Corporation  
Transfer Agent Dept.  
Tel: 0120-232-711 (toll-free in Japan)

### Depository and Registrar for American Depositary Receipts

Citibank, N.A., Shareholder Services  
P.O. Box 43077  
Providence, RI  
02940-3077  
USA  
Tel: 1-877-248-4237 (toll-free in the US)  
Fax: 1-201-324-3284  
E-mail: citibank@shareholders-online.com  
Ratio 1 ADR = 5 common shares  
NYSE: IX

### Stock Exchange Listings

Tokyo Stock Exchange      First Section  
                                         Securities Code: 8591  
New York Stock Exchange    Trading Symbol: IX

### Passive Foreign Investment Company Rules

The Company believes that it will be considered a "passive foreign investment company" for U.S. federal income tax purposes in the year to which these consolidated financial results relate and for the foreseeable future by reason of the composition of its assets and the nature of its income. A U.S. holder of the shares or ADSs of the Company is therefore subject to special rules generally intended to eliminate any benefits from the deferral of U.S. federal income tax that a holder could derive from investing in a foreign corporation that does not distribute all of its earnings on a current basis. Investors should consult their tax advisors with respect to such rules, which are summarized under "UNITED STATES TAXATION" in the Company's Form 20-F filed with the U.S. Securities and Exchange Commission.

### Presentation of Financial Information

The Company's fiscal year ends on March 31. The fiscal year ended March 31, 2016, is referred to throughout this Integrated Report as "FY2016.3" and other fiscal years are referred to in a corresponding manner.

### Forward-Looking Statements

This document may contain forward-looking statements about expected future events and financial results that involve risks and uncertainties. Such statements are based on our current expectations and are subject to uncertainties and risks that could cause actual results to differ materially from those described in the forward-looking statements. Factors that could cause such a difference include, but are not limited to, those described under "Risk Factors" in the Company's Form 20-F filed with the U.S. Securities and Exchange Commission and under "Business Risk" of the securities report (*yukashoken houkokusho*) filed with the Director of the Kanto Local Finance Bureau. The Company makes available free of charge on or through its website (<http://www.orix.co.jp/grp/en>) its annual report on Form 20-F and other reports.

## ORIX Corporation Corporate Planning Department

World Trade Center Bldg., 2-4-1 Hamamatsu-cho, Minato-ku, Tokyo 105-6135, Japan  
TEL: +81-3-3435-3121 FAX: +81-3-3435-3154 URL: <http://www.orix.co.jp/grp/en/>  
For inquiries about this Integrated Report, please contact us at the address above.