



## **DAIKYO's The Lions Myles Kuramae Wins the GOOD DESIGN AWARD 2025**

TOKYO, Japan – October 15, 2025 – DAIKYO INCORPORATED (“DAIKYO”) announced that its condominium, The Lions Myles Kuramae, has been awarded the GOOD DESIGN AWARD 2025 by the Japan Institute of Design Promotion.



Main approach of The Lions Myles Kuramae

The Lions Myles Kuramae is a condominium located in a riverside area, just a two-minute walk from the Sumida River Terrace\*<sup>1</sup>. The neighborhood features a streetscape where renovated buildings retaining the atmosphere of the Showa era house restaurants and general stores, creating a cityscape that harmonizes history with new culture.

Taito-ku has long been home to many manufacturers, and the area is dotted with cafés and shops filled with craftsmanship. Inspired by this culture of handwork and human connection in the city, the property adopted the design concept of “Nostalgic Modern.” The goal was to create a living space where the city and architecture coexist as one, offering new value that transcends time and trends.

The main approach incorporates an exterior design that blends potted and planted greenery, creating a modern look while inheriting the historical streetscape of Kuramae. The base section up to the third-floor railings features richly textured brick tiles and modern architecture design elements, while the top section incorporates fin-shaped metalwork. These details evoke a sense of handwork. The architectural plan integrates a lush front garden with the entrance hall, large corner windows that capture views of the Sumida River, and a rooftop garden, creating spaces where the residence and the city are seamlessly connected. This award recognizes the property’s design that merges the historical streetscape of Kuramae with a contemporary sensibility, as well as its adoption of features supporting diverse lifestyles. The design that achieves both comfort and functionality within compact layouts was also recognized.

DAIKYO will continue to address social issues and customer needs, creating homes that bring new value to everyday living.

\*1 A waterside public facility opened along approximately 36 km of the 47 km stretch along both banks of the Sumida River, where embankment foundations have been reinforced and made accessible to the public.

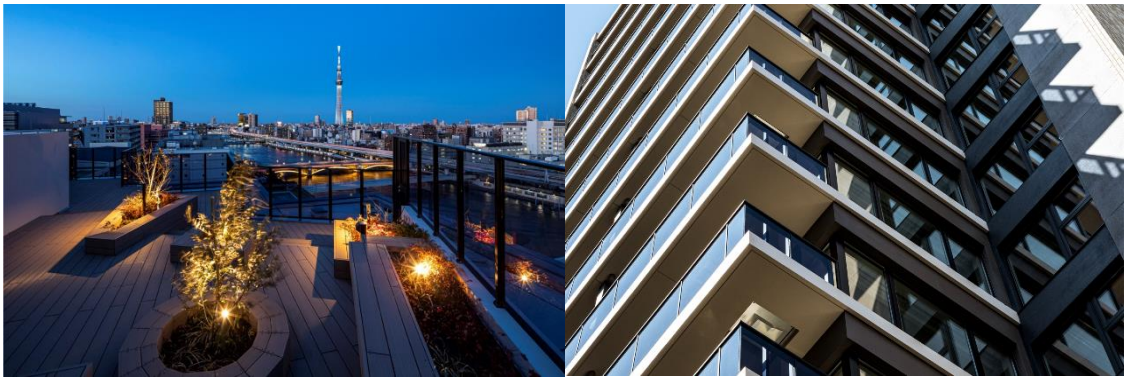
## 1. About The Lions Myles Kuramae

### ■ Overview

The Lions Myles Kuramae is a condominium located in a riverside area, just a two-minute walk from the Sumida River Terrace. The property offers convenient access, being a seven-minute walk from Toei Asakusa Line Kuramae Station and an eight-minute walk from JR Chuo/Sobu Line Asakusabashi Station, with seven stations and five train lines accessible within a 15-minute walk. The surrounding area features renovated buildings that retain the nostalgic atmosphere of the Showa era and now house shops, creating a calm yet contemporary living environment. The neighborhood also provides excellent convenience, with the popular Kuramae area known for its café culture, the restaurant-rich Asakusabashi area, and numerous establishments along the Sumida River Terrace within walking distance.

### ■ Features

- Taito-ku has long been home to many manufacturers, and the area is dotted with cafés and shops filled with craftsmanship. Inspired by this culture of handwork and human connection in the city, “Nostalgic Modern” was adopted as the design concept.
- The main approach blends potted and planted greenery to create an exterior design that feels both like part of the city and one’s own garden, greeting residents with a modern interpretation of the historical streetscape of Kuramae. The base section up to the third-floor railings features richly textured brick tiles and arch-shaped motifs inspired by modern architecture design elements. Fin-shaped metalwork adorns the top section, while hammered-finish metal panels under the eaves evoke a sense of handwork.
- The architectural plan integrates a lush front garden with the entrance hall, large corner windows that capture views of the Sumida River, and a rooftop garden, achieving a living space seamlessly connected with the city.
- The rooftop garden is designed with sight lines toward TOKYO SKYTREE—a key landmark—and the Sumida River Fireworks Festival, creating an open and relaxing atmosphere.
- Some residential units feature a Movable Table Integrated Kitchen, which won the GOOD DESIGN AWARD 2024. All units are equipped with the LIONS SMART BOX, a delivery box placed at each residence entrance that received the GOOD DESIGN AWARD 2021.



Top: Entrance hall / Bottom left: Rooftop garden (night view) / Bottom right: Corner window

## ■ Property Overview

Address: 1-2-6 Kuramae, Taito-ku, Tokyo

Access: 7-minute walk from Toei Asakusa Line Kuramae Station

8-minute walk from JR Chuo/Sobu Line Asakusabashi Station

Site area: 666.07 m<sup>2</sup>

Scale and structure: Reinforced concrete structure, 15 floors above ground

Total units: 70

Exclusive floor space: 38.20–53.10 m<sup>2</sup>

Floor plans: 1LDK–2LDK

Construction start date: March 22, 2023

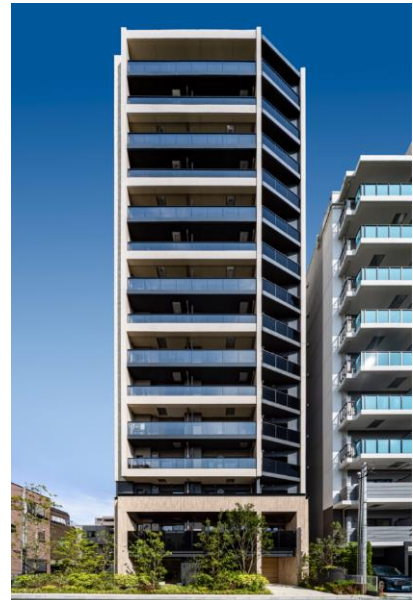
Completion date: March 21, 2025

Move-in date: April 9, 2025

Design: NIKKI SEKKEI Co., Ltd

Construction: DAIKYO ANABUKI CONSTRUCTION INCORPORATED

Distributor: DAIKYO INCORPORATED



Main facade of The Lions Myles Kuramae

## ■ Comments from the GOOD DESIGN AWARD Jury

This project is a condominium that harmoniously fuses the historical streetscape of Kuramae with a modern sensibility. It incorporates the charm of the city—where tradition and modernity coexist—into the living space, featuring a composition in which the architecture and the city are seamlessly connected. The exterior landscaping adopts a garden-like design that combines potted and planted greenery, creating a deliberate ambiguity between the streetscape and the residence. The facade employs materials that evoke the warmth of handwork, such as brick tiles and hammered-finish metal panels, expressing the distinctive “iki” stylish aesthetic of Kuramae. The common areas are designed not as enclosed working areas but as open environments, including a lounge integrated with a garden and a rooftop terrace that takes advantage of scenic views. Inside the residential units, features such as flexible kitchens and smart delivery boxes have been introduced to accommodate today’s diverse lifestyles. The design successfully achieves both comfort and functionality within compact layouts, providing user-friendly living environments for singles and DINKs households. Respecting the memory of the neighborhood while proposing new value for contemporary living, this project presents one possible direction for urban residential design.

## 2. About the GOOD DESIGN AWARD

A design commendation and promotion activity representative of Japan, the GOOD DESIGN AWARD is the successor of the Good Design Product Selection System that was established in 1957 under the sponsorship of the Ministry of International Trade and Industry. As a global design award with the participation of many companies and organizations from both inside and outside Japan, it is held annually to enhance the quality of lives and apply design toward addressing social issues and themes. G Mark—the symbol of winning the award—is widely known as a sign of excellent design quality.



**GOOD DESIGN  
AWARD 2025**

GOOD DESIGN AWARD official website: <https://www.g-mark.org/en>

## 3. About DAIKYO INCORPORATED

Established: December 1964

Address: Sendagaya No. 21 Daikyo Building, 4-24-13 Sendagaya, Shibuya-ku, Tokyo

Description of business: Housing development and sales, redevelopment

Website: <https://www.daikyo.co.jp/> (in Japanese)

### Contact Information:

Investor Relations and Sustainability Department

ORIX Corporation

Tel: +81-3-3435-3121

### About ORIX Group:

ORIX Group (ORIX Corporation TSE: 8591; NYSE: IX) was established in 1964 and has grown from its roots in leasing in Japan to become a global, diverse, and unique corporate group. Today, it is active around the world in financing and investment, life insurance, banking,

asset management, real estate, concession, environment and energy, automobile-related services, industrial/ICT equipment, ships and aircraft. Since expanding outside of Japan in 1971, ORIX Group has grown its business globally and now operates in around 30 countries and regions across the world with approximately 34,000 people. ORIX Group unites globally around its Purpose: “Finding Paths. Making Impact.” combining diverse expertise and innovative thinking to help our world develop in a sustainable way. For more details, please visit our website: <https://www.orix.co.jp/grp/en/>  
(As of March 31, 2025)

**Caution Concerning Forward-Looking Statements:**

These documents may contain forward-looking statements about expected future events and financial results that involve risks and uncertainties. Such statements are based on our current expectations and are subject to uncertainties and risks that could cause actual results that differ materially from those described in the forward-looking statements. Factors that could cause such a difference include, but are not limited to, those described under “Risk Factors” in the Company’s annual report on Form 20-F filed with the United States Securities and Exchange Commission and under “(4) Risk Factors” of the “1. Summary of Consolidated Financial Results” of the “Consolidated Financial Results April 1, 2024 – March 31, 2025” furnished on Form 6-K.