



**Located 2 minute's walk from Kuramae Station on the Toei Oedo Line, live in a town that combines history and new culture**

**Sales Begin for "Lions Myles Kuramae," a Property for Singles and DINKS**

**~Condominium gallery will open to the public on October 2~**

TOKYO, Japan - September 30, 2021 - DAIKYO INCORPORATED ("DAIKYO") announced today that it will open a condominium gallery to the public on October 2, 2021 for Lions Myles Kuramae (a total of 97 units on 15 above-ground floors), which is currently under construction in Taito-ku, Tokyo. It plans to begin sales to the general public in mid-October 2021.



Building exterior

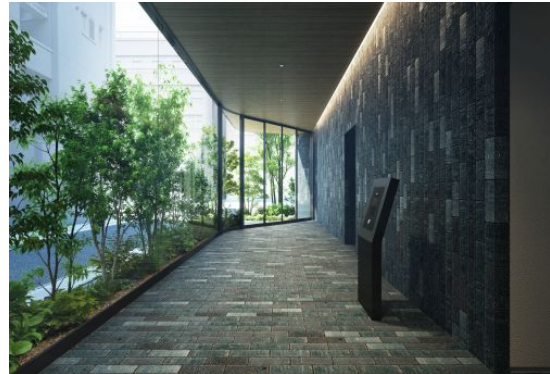


Image of entrance hall

Lions Myles is a condominium series for singles, DINKS and pre-families that has an exclusive area of 25 m<sup>2</sup> – 50 m<sup>2</sup> and has been designed taking good metropolitan access and living environment into account. Focusing on good access to work locations, development of this series of properties started in 2017 in mainly metropolitan areas.

Lions Myles Kuramae has a very convenient location, placing it at a 2-minute walk from Kuramae Station on the Toei Oedo Line and a 4-minute walk from Kuramae Station on the Toei Asakusa Line. There are 10 stations on six lines within a 15-minute walk from it. Located one street in from the major street running along the station, the area is lined with restaurants and variety stores in remodeled buildings that retain a Showa-era atmosphere, and residents can experience new culture together with a sense of history.

There are five types of unit layouts (1DK, 1LDK, 2DK, 2LDK and 3LDK) and a total of 15 variations. The first-floor lobby has semi-private co-working spaces and an exclusive delivery box for each residence.

DAIKYO will continue to create comfortable homes that cater to the needs of its customers.

## 1. Features of Lions Myles Kuramae

### (1) 2-minute walk from Kuramae Station on the Toei Oedo Line

A 2-minute walk from Kuramae Station on the Toei Oedo Line and a 4-minute walk from Kuramae Station on the Toei Asakusa Line. There are 10 stations on six lines\* within a 15-minute walk that are accessible.

\* Kuramae Station on the Toei Oedo Line and Toei Asakusa Line, Asakusa Station on the Toei Asakusa Line, Tokyo Metro Ginza Line, Tobu Skytree Line and Tsukuba Express, Tawaramachi Station on the Tokyo Metro Ginza Line, Shin-Okachimachi Station on the Toei Oedo Line and Tsukuba Express, and Asakusabashi Station on the Toei Asakusa Line and JR Sobu Line

### (2) Historic culture, cityscape bursting with creativity and meticulous design

Kuramae, where the Tokugawa Shogunate rice granary was located, developed from a site for woodwork manufacturing to the wholesale distribution of Japanese dolls and fireworks. It is an attractive area where people can go for strolls while enjoying the historic appearance that remains despite the appearance in recent years of restaurants with views of the Sumida River and general stores that give variety to the area. Views of reflections on the surface of the Sumida River that have long been favored by the general public of Japan have been depicted in original ceramic tiles that each differ from each other and are made by artisans using pine ash glaze. The external design uses these ceramic tiles to create an image of a “storehouse” housing precious items.

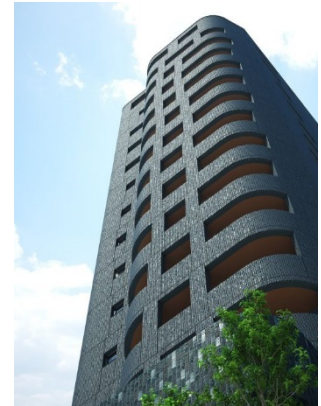


Image of external appearance

### (3) Sharing service supporting daily lifestyle

The first-floor lobby has a shared lounge and co-working space all equipped with Wi-Fi to enable use while remote working and the like. There are also exclusive delivery lockers for each residence called “LIONS My Box” to allow for peace of mind deliveries when not at home.

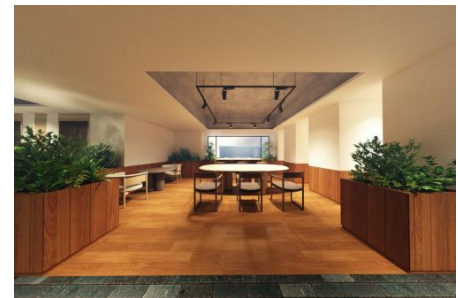


Image of lounge

### (4) Unit layouts

There are five types of unit layout (1DK, 1LDK, 2DK, 2LDK and 3LDK) and a total of 15 variations. Many of the condominiums are bright and airy, and approximately 80% of residences to be offered for sale are corner apartments. Each unit has been designed as a highly livable space. For example, depending on the type, one’s personal area can be divided off with a sliding door between the living room and dining room in the 1DK and 1LDK condominiums.

## 2. DAIKYO Lions Myles Condominium Series

Lions Myles leverages expertise cultivated through development of the Lions Mansion series as a brand offering excellent access, which is in strong demand by singles, DINKS and pre-family households working in metropolitan areas. Since 2017, DAIKYO has developed nine properties including Lions Myles Kuramae in Tokyo, Hokkaido and Fukuoka.

### Lions Myles Series

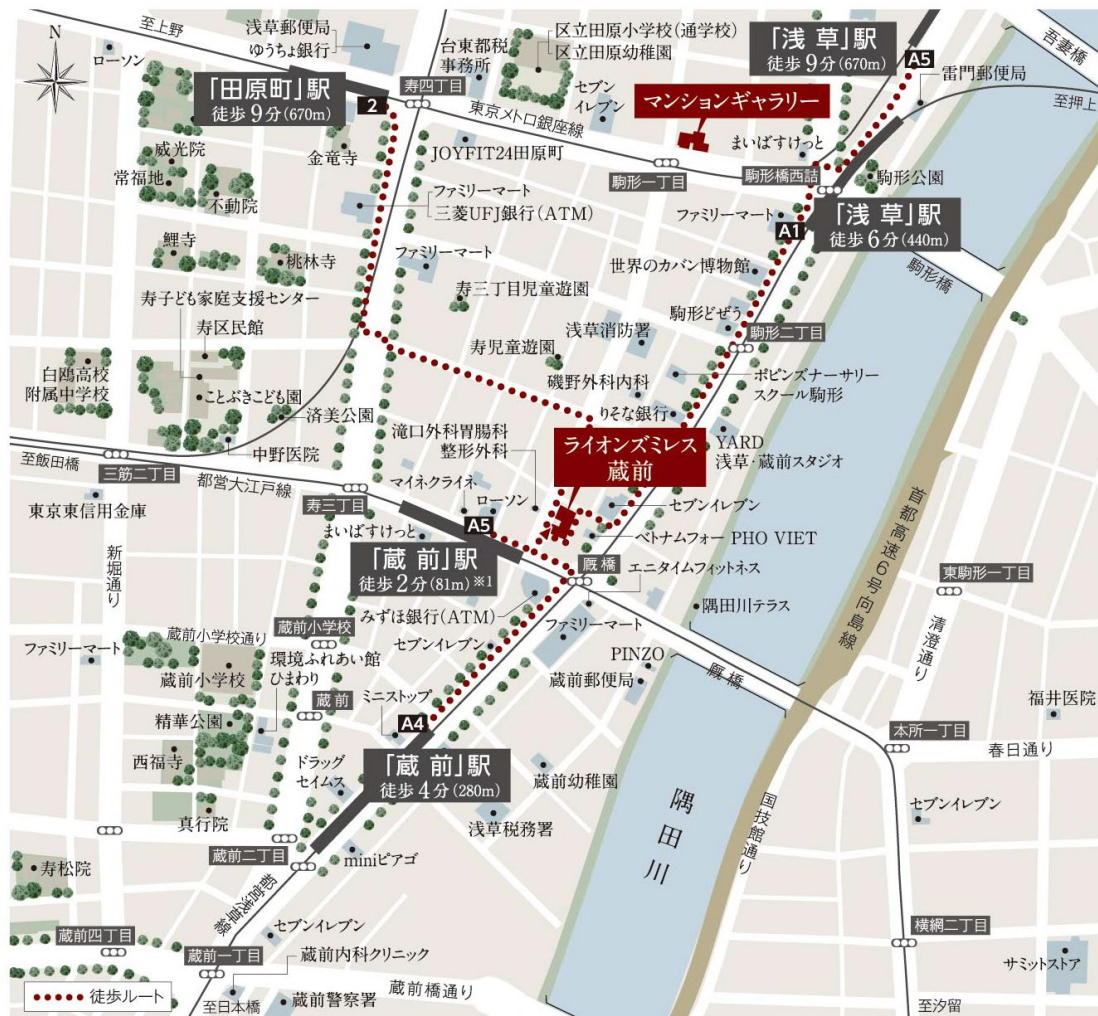
Property name	Address	Total number of units	Year of construction
Lions Chiyoda Iwamotocho Myles	2-chome, Iwamoto-cho, Chiyoda-ku, Tokyo	53	2018
Lions Waseda Myles	1-chome, Nishiwaseda, Shinjuku-ku, Tokyo	42	2017
Lions Asakusabashi Myles	1-chome, Torigoe, Taito-ku, Tokyo	54	2018

Lions Tokyo Minowa Myles	2-chome, Nihonzutsumi, Taito-ku, Tokyo	62	2019
Lions Tokyo Kikukawa Myles	4-chome, Tatekawa, Sumida-ku, Tokyo	71	2019
Lions Higashimukojima Myles	4-chome, Higashimukojima, Sumida-ku, Tokyo	37	2018
Lions Sapporo Odori Koen Myles	12-chome, Minami 2jo Nishi, Chuo-ku, Sapporo, Hokkaido	54	2020
Lions Myles Nishijin	3-chome, Josei, Sawara-ku, Fukuoka, Fukuoka	60	2022 (planned)

### 3. Property overview

Address: 1-11-1 (lot number) Komagata, Taito-ku, Tokyo  
Access: 2 minutes on foot from Kuramae Station on the Toei Oedo Line, 4 minutes on foot from Kuramae Station on the Toei Asakusa Line, 8 minutes on foot from Asakusa Station on the Tokyo Metro Ginza Line  
Scale and structure: Reinforced concrete structure; 15 levels above ground  
Total units: 97 (includes 10 priority units not for sale as lots), and one office  
Unit area: 25.23 m<sup>2</sup> – 69.01 m<sup>2</sup>  
Unit plans: 1DK, 1LDK, 2DK, 2LDK and 3LDK  
Sales start: Mid-October 2021 (planned)  
Start of construction: April 5, 2021  
Date of completion: March 10, 2023 (planned)  
Design: GENDAI SOUGO Architects and Engineers, inc.  
Construction: Daito Trust Construction Co., Ltd.  
URL: <https://lions-mansion.jp/MN190011/> (in Japanese)

## Location Map



※1. 都営大江戸線「蔵前」駅から現地まで81mの距離は実測です。

## Contact Information:

Investor Relations and Sustainability Department

ORIX Corporation

Tel: +81-3-3435-3121

## About ORIX:

ORIX Corporation (TSE: 8591; NYSE: IX) is a financial services group which provides innovative products and services to its customers by constantly pursuing new businesses.

Established in 1964, from its start in the leasing business, ORIX has advanced into neighboring fields and at present has expanded into lending, investment, life insurance, banking, asset management, automobile related, real estate and environment and energy related businesses. Since entering Hong Kong in 1971, ORIX has spread its businesses globally by establishing locations in 31 countries and regions across the world.

Going forward, ORIX intends to utilize its strengths and expertise, which generate new value, to establish an independent ORIX business model that continues to evolve perpetually. In this way, ORIX will engage in business activities that instill vitality in its companies and workforce, and thereby contribute to society. For more details, please visit our website: <https://www.orix.co.jp/grp/en/>  
(As of March 31, 2021)

**Caution Concerning Forward Looking Statements:**

These documents May contain forward-looking statements about expected future events and financial results that involve risks and uncertainties. Such statements are based on our current expectations and are subject to uncertainties and risks that could cause actual results that differ materially from those described in the forward-looking statements. Factors that could cause such a difference include, but are not limited to, those described under “Risk Factors” in the Company’s annual report on Form 20-F filed with the United States Securities and Exchange Commission and under “(4) Risk Factors” of the “1. Summary of Consolidated Financial Results” of the “Consolidated Financial Results April 1, 2020 – March 31, 2021.”