

**FOR IMMEDIATE RELEASE****Contact Information:**

ORIX Corporation  
Corporate Planning Department  
Tel: +81-3-5419-5042  
Fax: +81-3-5419-5901  
URL: <http://www.orix.co.jp/grp/en/>

**ORIX to Begin First Roof Rental Solar Power Generation Project**  
**Hokuriku Coca-Cola Bottling's Tonami Plant to Generate up to 1.5 MW of Electricity**

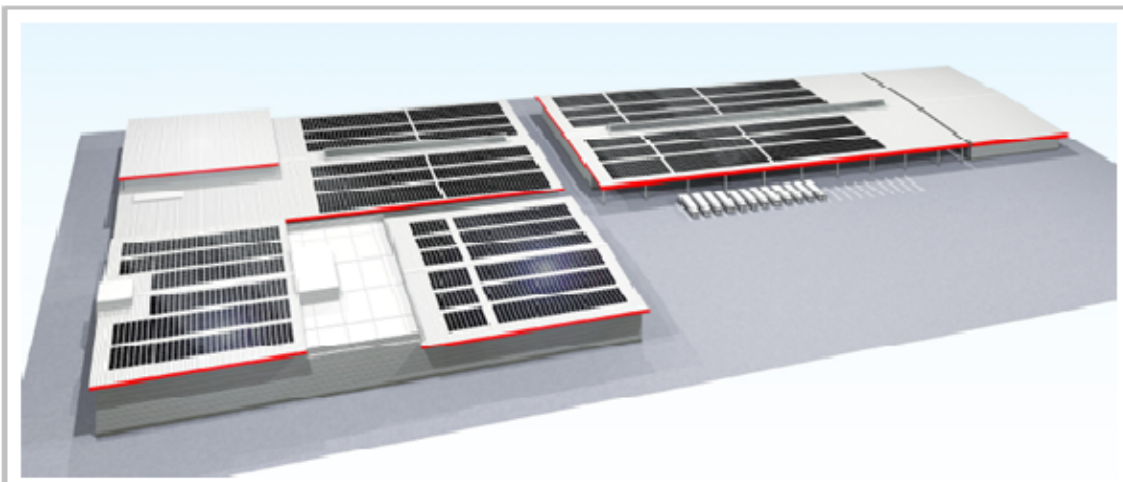
TOKYO, Japan – October 12, 2012 - ORIX Corporation (TSE: 8591; NYSE: IX), a leading integrated financial services group, announced today that it will conduct a solar power generation business with a maximum output of 1,502 kW (1.5 MW) at the Tonami plant of Hokuriku Coca-Cola Bottling Co., Ltd.

Roof rental solar power generation is a business in which ORIX rents the roofs of factories, warehouses and other facilities owned by customers and generates electricity from solar power generation systems installed on them. In this way, ORIX will achieve efficient power generation by taking full advantage of customer-owned facilities, and not just conduct large-scale solar power generation that leases idle land from local governments and companies.

For their part, in addition to being able to effectively utilize assets, customers should also see an improvement in the efficiency of facility air conditioning thanks to the heat-shielding effect of the solar panels.

ORIX is developing various electricity-related businesses, including the ESCO (Energy Service Company) business, bulk electric power purchasing for condominiums, electric power trading and biomass power generation. Going forward, ORIX will continue to actively develop renewable energy and other energy-related businesses, as well as aim to provide new added value to customers.

Artistic rendering of the installation



## **Business Outline**

Location	1202-1 Higashibo, Tonami-shi, Toyama Prefecture
Power generation capacity (module capacity)	1,502 kW
Installation (rooftop) area	20,327.27 m <sup>2</sup>
No. of panels	15,810
Projected annual power generation (first year)	1,364,369 kWh Equivalent to the annual power consumption of approximately 380 ordinary households (*)
Commencement of operation	February 2013 (planned)

(\*) Calculation based on consumption of 3,600 kWh a year per household

Source: "Electricity Statistics Information," The Federation of Electric Power Companies of Japan

## **About ORIX**

ORIX Corporation (TSE: 8591; NYSE: IX) is an integrated financial services group based in Tokyo, Japan, providing innovative value-added products and services to both corporate and retail customers. With operations in 28 countries and regions worldwide, ORIX's activities include corporate financial services, such as leases and loans, as well as automobile operations, rental operations, real estate, life insurance, banking and loan servicing. For more details, please visit our website at: <http://www.orix.co.jp/grp/en/>

These documents may contain forward-looking statements about expected future events and financial results that involve risks and uncertainties. Such statements are based on our current expectations and are subject to uncertainties and risks that could cause actual results to differ materially from those described in the forward-looking statements. Factors that could cause such a difference include, but are not limited to, those described under "Risk Factors" in the Company's annual report on Form 20-F filed with the United States Securities and Exchange Commission and under "4. Risk Factors" of the "Summary of Consolidated Financial Results" of the "Consolidated Financial Results April 1, 2011 – March 31, 2012."

-end-