



July 25, 2011

FOR IMMEDIATE RELEASE

Contact Information:

ORIX Corporation
Investor Relations
Tel: +81-3-5419-5042
Fax: +81-3-5419-5901
URL: <http://www.orix.co.jp/grp/en/>

**ORIX Names “Kyoto Aquarium”
- Development Progresses for First Inland Aquarium in Kyoto -**

TOKYO, Japan – July 25, 2011 – ORIX Real Estate, a subsidiary of ORIX Corporation, announced that it has decided to name the aquarium it is developing in Kyoto’s Umekoji Park “Kyoto Aquarium.” Kyoto Aquarium will be Japan’s first large-scale inland aquarium*¹.

Umekoji Park, the site of Kyoto Aquarium, is a 15-minute walk from Kyoto Station and, despite its urban setting, is a favorite spot for residents and tourists alike for its foliage and flora. The name Kyoto Aquarium was decided to express the desire to create Kyoto’s first aquarium as a facility that embodies Kyoto’s aesthetic sense, has close community ties and will be loved by both Kyoto residents and visitors alike by incorporating the characteristics of the location.

Since proposing the aquarium to the city of Kyoto in July 2008, ORIX has consulted both the city of Kyoto and local residents. Construction began in July of last year and is progressing towards a spring 2012 opening. Last September a “Kyoto Aquarium Exhibition Activity Expert Committee” was established consisting of experts and academics in marine biology and the environment, and a wealth of advice and opinions concerning exhibitions and activities have been received through the course of more than 16 meetings.

Based on the advice of committee experts the concept of Kyoto Aquarium will be Kyoto’s connection to water, represented by the changes a single dewdrop undergoes as it flows into the rivers and sea before returning once again to the countryside. Exhibitions will focus on utilizing Kyoto’s scenery to show the relationship with the wide variety of living creatures such as rivers that spawn freshwater fish and the wildlife found in the rice paddies that dot the countryside. Kyoto Aquarium will work to create an environment where birds, butterflies and other wildlife can come and go in conjunction with “*Inochi no Mori* (Forest of Life),” a biotope that has restored the natural ecosystem within Umekoji Park.

Kyoto Aquarium will also serve as a place for people of all ages to learn about the environment, an information center for activities to protect Kyoto’s environment and to introduce the culture fostered by a city rich with water. Exhibition details will be announced as preparations progress.

ORIX Real Estate has been operating the Ennoshima Aquarium as a PFI since April 2004. ORIX will capitalize on this know-how with the planned openings of Kyoto Aquarium and Sumida Aquarium (tentative name) in the Tokyo Sky Tree complex in spring 2012.

In preparation for the spring 2012 opening of Kyoto Aquarium, ORIX Real Estate aims to create a facility that is close to the people of Kyoto.

*1 Source: ORIX Real Estate. A large-scale aquarium is defined as an aquarium that is 50km from the coast with a total floor area of more than 10,000m².

Facility Overview

Name of Facility:	KYOTO AQUARIUM
Planned Opening:	Spring, 2012
Location:	35-1 Kankijicho Kyoto Shimogyo-ku, Kyoto (Umekoji Park)
Transportation:	Approx. 15-minute walk from Kyoto station (Tokaido Line), and Tambaguchi station (Sanin Line)
Floor Area:	10,981.58m ²
Floors:	3 stories
Total Water Volume:	Approx. 3,000t
Design:	Toyo Sekkei Co., Ltd. TAISEI Corporation
Construction:	TAISEI Corporation

Facility Location

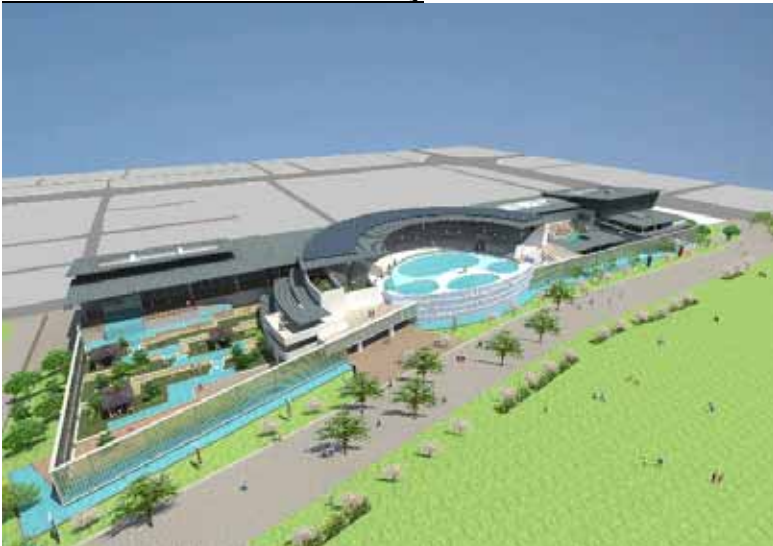


Location of Umekoji Park highlighted in orange



Map of Umekoji Park

Artistic Rendition of the Facility





“Countryside Zone”

This area will convey the human bond with living creatures by recreating the rice paddies and vegetation that can be seen throughout the countryside that serves as a backdrop.



“Rivers Connecting the Mountains and the Sea Zone”

Rivers undergo changes as they flow from the mountains to the sea. Try to see what types of living creatures you can find hiding upstream, downstream and in the river delta.

About ORIX

ORIX Corporation (TSE: 8591; NYSE: IX) is an integrated financial services group based in Tokyo, Japan, providing innovative value-added products and services to both corporate and retail customers. With operations in 27 countries and regions worldwide, ORIX’s activities include corporate financial services, such as leases and loans, as well as automobile operations, rental operations, real estate, life insurance, banking and loan servicing. For more details, please visit our website at: <http://www.orix.co.jp/grp/en/>

These documents may contain forward-looking statements about expected future events and financial results that involve risks and uncertainties. Such statements are based on our current expectations and are subject to uncertainties and risks that could cause actual results to differ materially from those described in the forward-looking statements. Factors that could cause such a difference include, but are not limited to, those described under “Risk Factors” in the Company’s annual report on Form 20-F filed with the United States Securities and Exchange Commission and under “4. Risk Factors” of the “Summary of Consolidated Financial Results” of the “Consolidated Financial Results April 1, 2010 – March 31, 2011.”