



ORIX Group Eco Service Guide

ORIX Group Eco Services

Energy Business ◉ P.05



Power Generation (Renewable Energy) ◉ P.05

Mega-Solar Power Generation ◉

Biomass Power Generation

Rooftop Solar Power Generation ◉

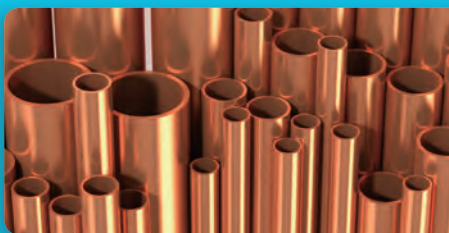
Geothermal Power Generation

Sales of Solar Power Systems

Wind Power Generation

Purchase of Renewable Energy

Resources and Waste Business ◉ P.13



Advanced Waste Processing Facilities (Gasification Furnace)

Metal Waste Processing Facilities

Nationwide Recycling System

Other Eco Services ◉ P.15

One-stop Eco-friendly Services for Automobiles

- Car Rental and Car Sharing (EV and HV)
- Maintenance Services
- ORIX "e-Telematics" Service
- Used-Auto Leasing and Sales

Environment-related Equipment Rental

Sales of Tradable Green Power Certificates

Sale of Rental Equipment and Purchase of Used Equipment

Carbon Offset Service
Sales of Carbon Credits

Contract Testing Services for Renewable Energy-related Equipments

Environmentally Friendly Loan Guarantees

Support for the Introduction of Low-Carbon Equipment (Eco-lease)

Eco-Friendly Real Estate Business ◉ P.17

Logistics Centers

ORIX Theater

Office Buildings

Kyocera Dome Osaka

Homes

Golf Courses

Aquariums

ORIX Group Eco Activities ◉ P.18

SANGO ORIX - Okinawa Coral Reef Restoration Project

Enosui ECO

Hotel Waste Food Recycling Project



Energy Business

▶ P.05



Resources and Waste Business

▶ P.13



Other Eco Services

▶ P.15



Eco-Friendly Real Estate Business

▶ P.17



ORIX Group Eco Activities

▶ P.18

Electric Power Supply ▶ P.08

Electric Power Trading

Bulk Electric Power Purchasing Service

Energy Conservation ▶ P.09

ESCO Services

“Hatto Watto” Demand Response Service

Electricity Visualization and Automated Control Services

ESCO Fund

Storage Batteries ▶ P.11

Storage Battery System Rental Service

Overseas ▶ P.12

Investment in power generation company GBPC in the Philippines

Acquisition of U.S.-based energy management service company Enovity, Inc.

IN FOCUS

Solar Power Generation Track Record

Amid heightened interest in the use of renewable energy, the ORIX Group is steadily promoting its development. In our mega-solar power generation business, we aim to develop power projects with a combined maximum output of 300 MW in 3 years from the fiscal year ended March 31, 2013. In our rooftop power generation business, we aim to install systems with a combined maximum output of 100 MW. In addition, in our solar power systems sales business, we sold systems with a combined generating capacity of 92 MW in the fiscal year ended March 31, 2013. ORIX will continue to support the smooth introduction of solar power generation systems in response to customer needs.



Mega-Solar

28 sites across Japan

Combined maximum output 143.2 MW



Rooftop Power Generation

49 locations across Japan

Combined maximum output 27.2 MW

As of June 28, 2013

Projected annual power generation of 185.66 million kWh

Equivalent to the annual power consumption of approximately 51,600 ordinary households

* Calculation based on consumption of 3,600 kWh a year per household Source: Electricity Statistics Information, The Federation of Electric Power Companies of Japan

Progress and Development of Environment and Energy Businesses

From Leasing to Neighboring Business Fields and Beyond

Since its foundation in 1964, starting from the leasing business, ORIX has evolved its business by continuously expanding into neighboring fields and acquiring a wide range of expertise. In the field of environment and energy, from its investment in a wind power generation business in 1995, ORIX has expanded its environment and energy businesses across a wide area including waste processing, energy conservation services, electric power supply, power generation using renewable energy and metal resources.

Energy field

Derived from leasing and consulting functions



Entry into electric power business



Expansion of energy-saving services



- 1995 • Invested in a wind power company
- 2000 • Launched ESCO services
- 2002 • Established Energy and Eco Services Department at ORIX Corporation

- 2007 • Launched electricity wholesale business
- 2008 • Acquired Agatsuma Electric Power Co., Ltd. (Now Agatsuma Bio Power Co., Ltd.)
- 2009 • Launched electricity trading business

Leasing

Developments in Japan and Overseas

- 1995 • Electric Utility Industry Reform (Liberalization of electric power wholesale in Japan)

- 2002 • Passing of Renewable Portfolio Standards Law
- 2005 • Opening of the Japan Electric Power Exchange

- | 1995~ | 2000~ |
|---|---|
| <ul style="list-style-type: none"> 1997 • Adoption of the Kyoto Protocol • Strengthening of regulations through revision of Waste Disposal and Public Cleansing Law 1998 • Passing of Law Concerning the Promotion of Measures to Cope with Global Warming | <ul style="list-style-type: none"> 2000 • Passing of the Basic Law for Establishing the Recycling-based Society 2002 • Passing of the Automobile Recycling Law 2005 • The Kyoto Protocol enters into force • Creation of Japan's Voluntary Emissions Trading Scheme (JVETS) |

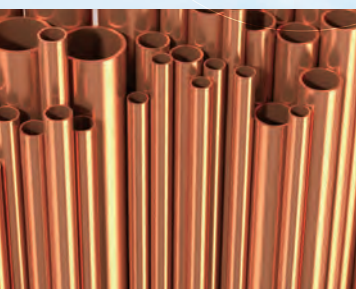
- 1998 • Established ORIX Eco Services Corporation

- 2002 • Established ORIX Environmental Resources Management Corporation
- 2003 • Launched Nationwide Recycling System business



Environmental field

Derived from proper processing of end-of-lease assets



Network-building

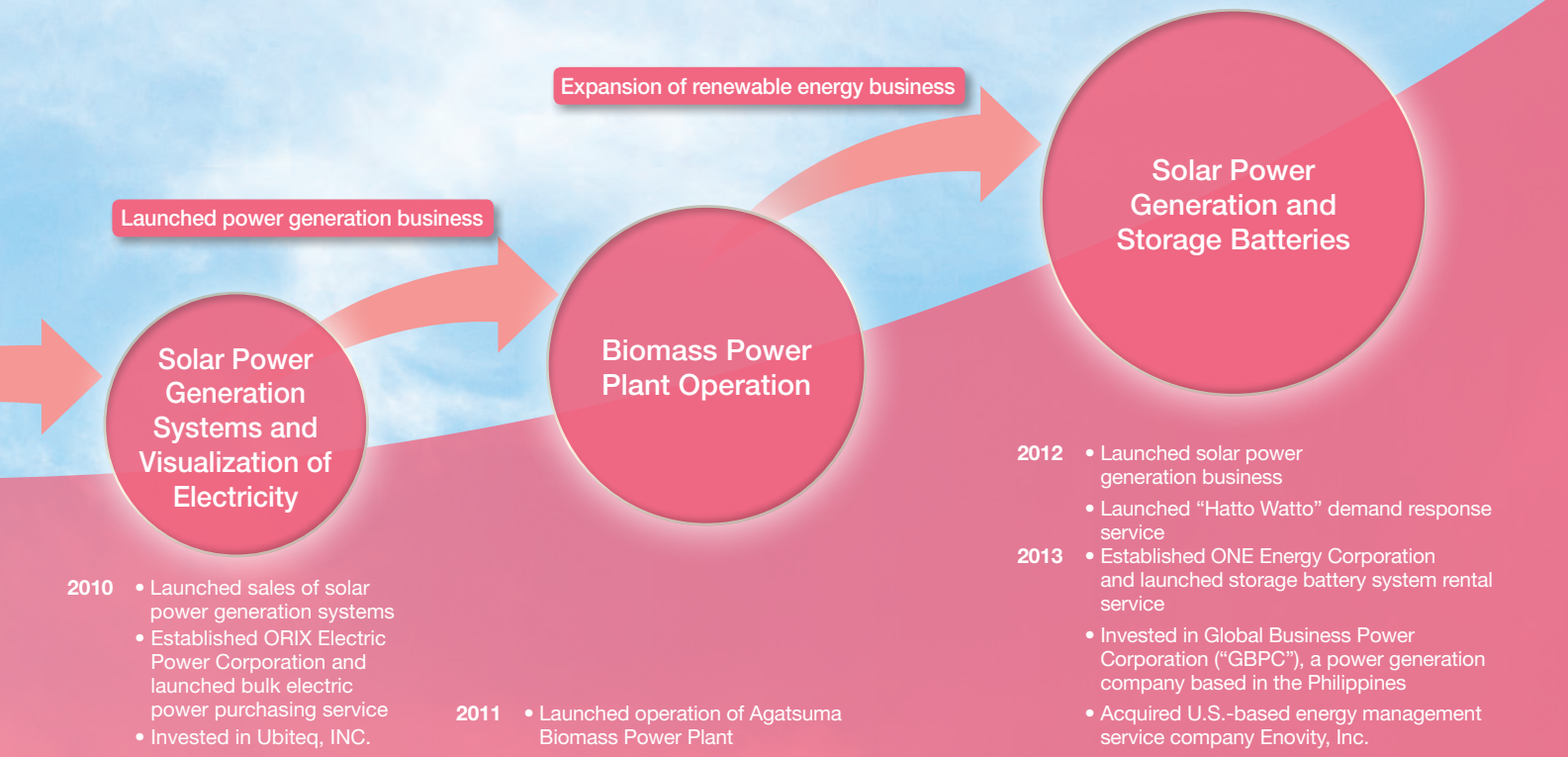
Operation of waste processing facilities

Environmental Policy

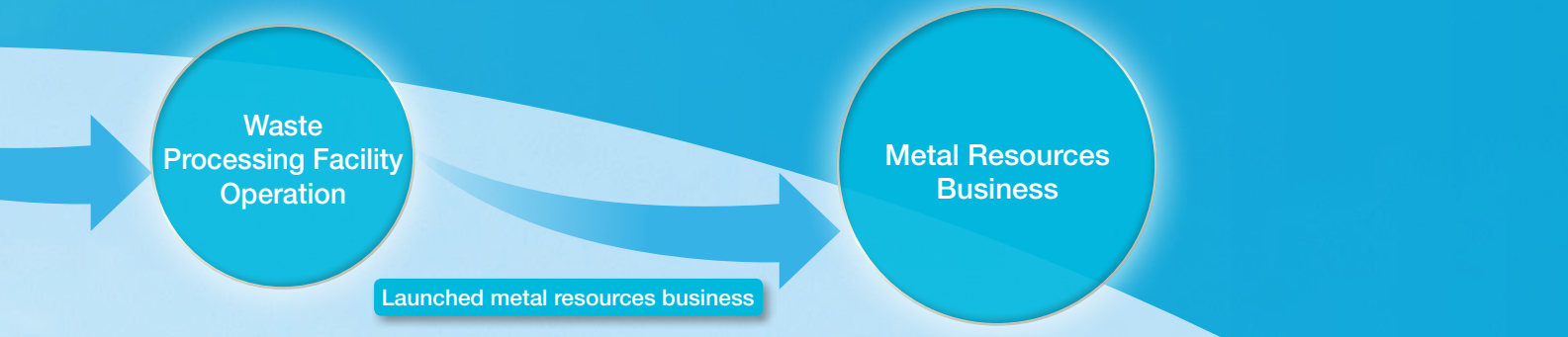
The ORIX Group will contribute to resolving environmental and energy issues through its business operations that perceive the needs of customers and society. This commitment will direct our efforts as we continue to expand the range of our business and grow.

Activity Targets

1. Provide new Eco Services that contribute to the resolution of the environmental and energy issues faced by customers and society
2. Maintain an understanding of the environmental impact of our business and work to reduce this impact while complying with environmental regulations
3. Improve employee awareness and knowledge to ensure environmental initiatives that match the characteristics of each business are implemented
4. Provide appropriate information regarding legally mandated disclosure and environmental initiatives

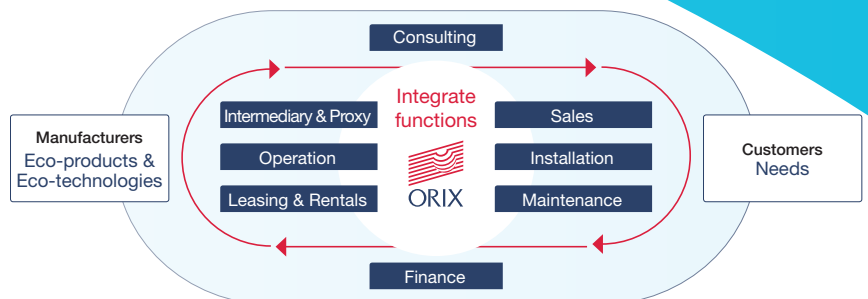


- 2009** • Start of system for purchasing surplus solar power
- 2010** • Start of the First Commitment Period of the Kyoto Protocol
- 2011** • Passing of Act on Special Measures Concerning Procurement of Renewable Electric Energy by Operators of Electric Utilities
- 2012** • Introduction of feed-in tariff system for renewable energy
- 2010** • The Act Concerning the Rational Use of Energy enters into force
- Partial Amendment to the Law Concerning the Promotion of Measures to Cope with Global Warming enters into force
 - The Revised Tokyo Metropolitan Environmental Security Ordinance enters into force
 - Convention on Biological Diversity Conference (COP10)
- 2012** • Rio+20 UN Conference on Sustainable Development, Rio de Janeiro, Brazil
- End of the First Commitment Period of the Kyoto Protocol
 - Introduction of Tax of Global Warming Countermeasures
- 2013** • Small Electric Household Appliance Recycling Law enters into force
- 2006** • Launched operations at ORIX Environmental Resources Management's Yorii Plant
- 2008** • Acquired Kanematsu Kankyo Co., Ltd. renamed Funabashi Eco Services Corporation (Now ORIX Eco Services Corporation)
- Launched Carbon Offset service
- 2010** • Established strategic alliance with the Chinese Academy of Sciences
- 2011** • Invested in Chinese water utility operator, China Water Affairs
- Won contract to participate in the cooperative preparatory study for a JICA PPP infrastructure project relating to sewage systems in Indonesia and Vietnam
 - Launched metal resources business
- 2013** • Merger of ORIX Eco Services Corporation and Funabashi Eco Services Corporation



As an Eco Services Integrator

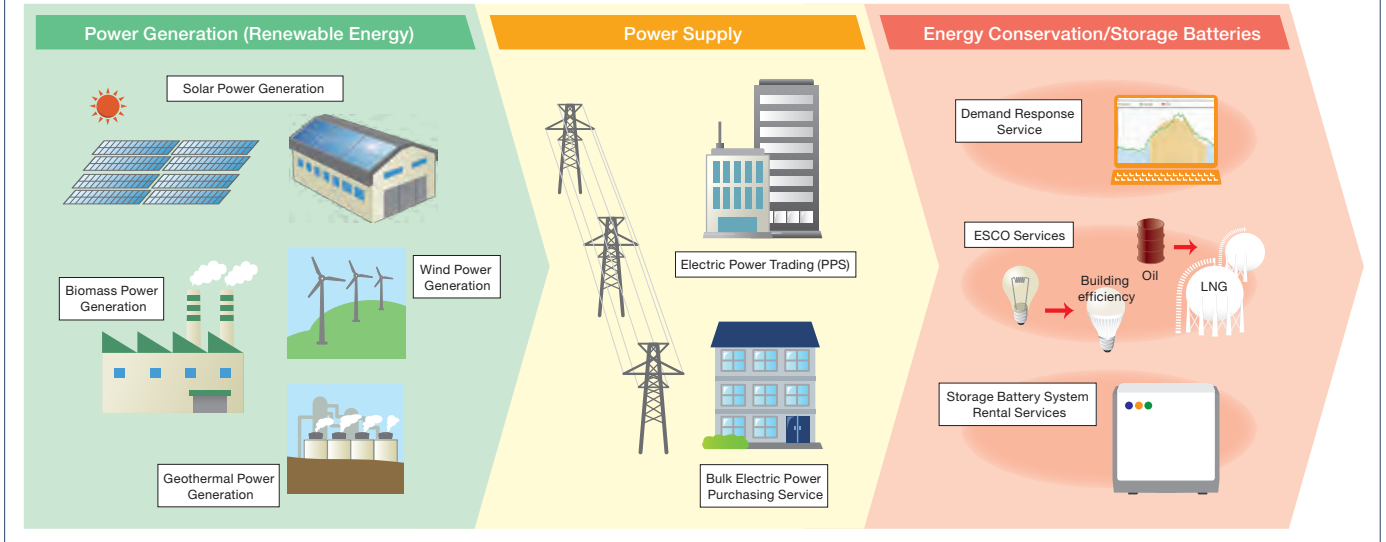
As an Eco Services Integrator, the ORIX Group provides a comprehensive range of functions which respond to the eco-product, eco-technology and energy needs of our customers.



Energy Business

The ORIX Group is responding to the energy needs of customers in a variety of fields, extending from upstream to downstream areas of the energy business. Specific fields include the small and large-scale generation of energy from renewable sources, supply of lower priced electricity and provision of energy-saving services.

The ORIX Group's Energy Business



Power Generation (Renewable energy)

The ORIX Group is contributing to the spread of renewable energy including solar, biomass, geothermal, wind and other renewable energy sources.

Mega-Solar Power Generation

ORIX Corporation
Kyuko-Lease Inc.

Large-scale solar power plants on disused land owned by local government and companies

ORIX is renting disused land owned by local government, companies and other landowners across Japan to build large-scale mega-solar power generation facilities (Mega-Solar) with maximum output capacities of more than 1,000 kW (1 MW).

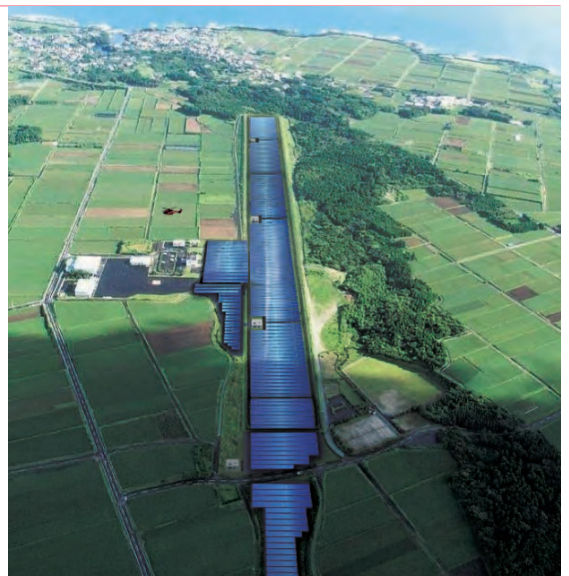
CASE STUDY

Japan's first mega-solar power plant on a former airport site Makurazaki City, Kagoshima Prefecture

Due to the mounting budget deficits over the management and operation of Makurazaki Airport, ongoing fiscal policy and the financial burden faced by residents, Makurazaki City decided to close the airport and lease the site for use as a mega-solar power plant.

Currently, ORIX and Kyudenko Corporation are working together to install a mega-solar power plant with a maximum output of 8,218 kW (8.2 MW) on the former Makurazaki Airport site. Construction is scheduled to be completed in September 2014. The two companies are also planning to remodel a section of the airport terminal building to provide a space for tours and a space for environmental education programs on how solar power generation works. They also plan to install an astronomical observatory and to provide a shuttle bus for plant tours in order to contribute to the local community.

Image of completed project





Rooftop Solar Power Generation
ORIX Corporation
Kyuko-Lease Inc.

Solar power generation using the rooftops of customer facilities

ORIX is promoting a solar power generation business renting the roofs of factories, warehouses and other large-scale facilities owned by customers and using them to generate electricity from solar power systems installed on them. ORIX will achieve efficient power generation by not just conducting large-scale solar power generation on disused land but by also taking full advantage of customer-owned facilities. For their part, in addition to being able to use their assets effectively, customers will benefit from reduced demand for internal air conditioning at their facilities due to the heat-shielding effect of the solar panels and a reduced rate of roof aging. ORIX is also developing solar power generation businesses using the rooftops of commercial facilities and other properties owned by the ORIX Group.

CASE STUDY

ORIX rents the rooftops of 18 logistics centers nationwide

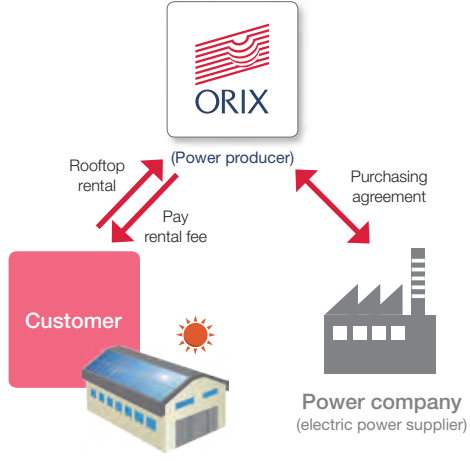


Ota Branch, Kanto Seino Transportation Co., Ltd.

Seino Holdings Co., Ltd.

ORIX is operating a solar power generation business with a combined maximum output of 5,614 kW (5.6 MW) by renting the rooftops of 18 locations owned by Seino Holdings (Ogaki City, Gifu Prefecture) and its group companies, including sales branches and logistics centers. The projected annual power generation is approximately 5.59 million kWh, which is equivalent to the annual power consumption of approximately 1,600 ordinary households*. Seino Holdings agreed to this initiative out of consideration for the environment and because its buildings have strong, flat roofs ideally suited for the installation of solar power generation equipment.

* Calculation based on consumption of 3,600 kWh a year per household
Source: Electricity Statistics Information, The Federation of Electric Power Companies of Japan



Sales of Solar Power Systems
ORIX Corporation

From selecting appropriate equipment to formulating financing plans and installing and maintaining equipment, ORIX provides total support for customer-based power generation

ORIX provides support for customers investing in solar power systems at low cost by leveraging economies of scale using their network of installation companies nationwide and procuring equipment directly from manufacturers. ORIX assists customers with the smooth introduction of systems by providing everything from project design to post-installation maintenance on a one-stop basis. This includes selecting appropriate equipment from multiple manufacturers, funding measures appropriate to the customer including leasing, installment loans, financing and rental, as well as other services such as providing support for obtaining facility certification for the feed-in-tariff system.

CASE STUDY

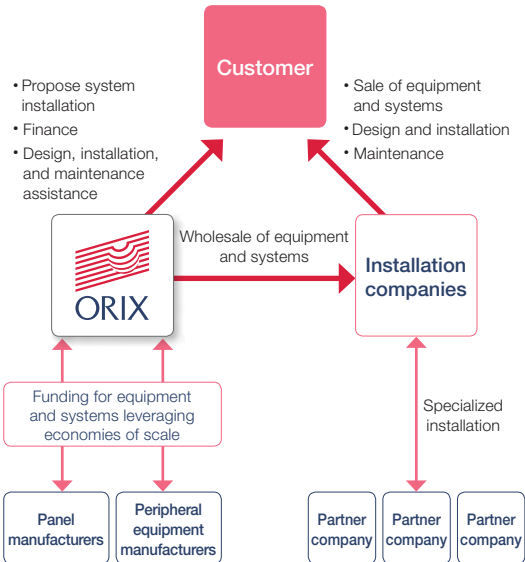
A power generation business making effective use of logistics center rooftops

ARATA CORPORATION

ORIX sold solar power systems with a maximum output of 877 kW to ARATA, a major household goods wholesaler located in Funabashi City, Chiba Prefecture. The solar power systems were installed on the rooftops of two of the company's logistics centers. As a result, it is expected that they will sell 880,000 kWh of electricity annually to power companies. As this leads to positive PR for our customers own environmental initiatives, in the future, ARATA plans to consider installing additional solar power systems at other logistics centers.



Kanagawa Center, ARATA CORPORATION





Agatsuma Biomass Power Plant

Biomass Power Generation

Agatsuma Bio Power Co., Ltd.

Biomass power generation utilizing wood chips

Agatsuma Bio Power Co., Ltd. operates the Agatsuma Biomass Power Plant, a wood chip-fired thermal power station located in Gunma Prefecture. Wood chip-fired power generation works by using wood chips as fuel to heat a boiler and then using the steam from the boiler to power a turbine to generate electricity.

The use of biomass as an alternative to fossil fuels not only helps to reduce CO₂ emissions but also enables environmentally friendly power generation through the use of thermal recycling*¹ technology. The Agatsuma Biomass Power Plant has a maximum output of 13,600 kW (13.6 MW), with annual power transmission of 92 million kWh*². Converted to ordinary household electricity use, this equates to the annual power consumption of approximately 25,600 households*³.

*¹ Thermal recycling refers to the process of collecting and utilizing heat energy generated from combustion, rather than merely incinerating waste materials.

*² Fiscal Year 2012 Track Record

*³ Calculation based on consumption of 3,600 kWh a year per household

Source: Electricity Statistics Information, The Federation of Electric Power Companies of Japan

Geothermal Power Generation

ORIX Corporation

Power generation using geothermal energy

The Suginoi Hotel (operated by ORIX Real Estate) owns and operates one of the largest private geothermal power generation facilities in Japan. The Suginoi geothermal power generation facility uses geothermal heat and has a maximum output of 1,900 kW (1.9 MW). The

electricity generated by the plant is used to power all of the hotel's electrical installations and is able to supply one-third of the power used during peak hours.

Capitalizing on the geothermal power generation know-how obtained at the Suginoi Hotel and its experience operating hot springs hotels, ORIX is considering initiatives to revitalize local communities and develop commercial geothermal power generation facilities in other hot springs areas.



Suginoi geothermal power generation facility

Wind Power Generation

ORIX Corporation

ORIX has invested in 4 wind power generation projects with a total of 34 wind turbine units. The combined maximum output of these units is 35,950 kW (35.9 MW).



Akita Araya Wind Farm

- Akita Araya Wind Farm 6,800 kW (Akita Prefecture)
- Tachikawa Wind Farm 3,200 kW (Yamagata Prefecture)
- Goto-Kishiku Wind Power Plant 1,200 kW (Nagasaki Prefecture)
- Nikaho Kogen Wind Power Plant 24,750 kW (Akita Prefecture)

Purchase of Renewable Energy

ORIX Corporation

ORIX purchases electric power generated by customers from renewable energy by adding a premium to the feed-in-tariff purchase price. The purchased electric power is supplied to customers through the electric power trading business.

Electric Power Supply

ORIX helps to reduce customer power costs through a low-cost power supply service.

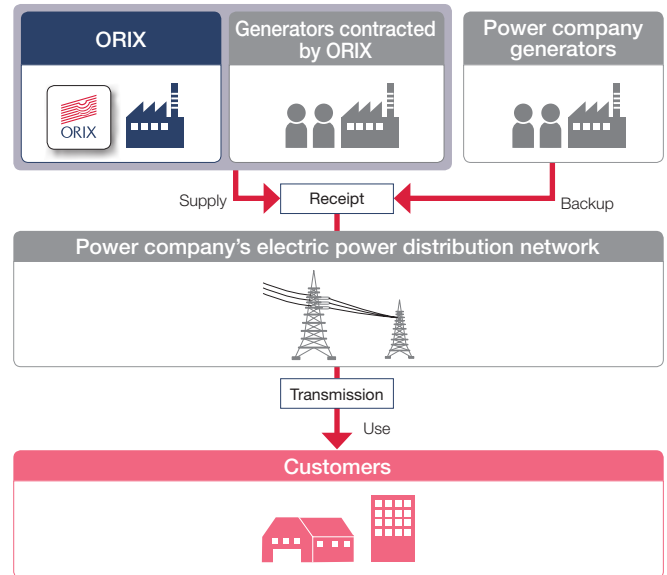
Electric Power Trading

ORIX Corporation

Supplying low cost electric power to businesses as a PPS

As a Power Producer and Supplier (PPS*), ORIX supplies low cost electric power mainly to private businesses in need of high-voltage power within the transmission areas of the Tokyo Electric Power Company, Inc., Kansai Electric Power Co., Inc. and the Chugoku Electric Power Co., Inc.

* PPS refers to designated scale electricity utilities that supply electric power on a contractual basis to customers in need of more than 50 kW through the power lines of power companies and other suppliers of electric power.



Bulk Electric Power Purchasing Service

ORIX Electric Power Corporation

Creating "intelligent homes" through the Bulk Electric Power Purchasing Service

ORIX Electric Power purchases low-cost, high-voltage bulk electric power from power companies and redistributes it as low-voltage power to customers residing in new and existing homes. This service results in lower charges for customers on their utility bills.

Furthermore, ORIX Electric Power was appointed as a HEMS* aggregator in connection with the "FY 2012 Government Subsidy Program to Promote Acceleration of the Introduction of Intelligent Homes", which is being promoted by the Ministry of Economy, Trade and Industry. From September 2013, ORIX Electric Power has been providing the "EneVista" service to promote efficient energy use and reasonable power consumption at all homes where the service is introduced. Through the free of charge installation of smart meters, ORIX Electric Power has developed a "power conservation points" service in order to promote power conservation during power shortages and to manage power company prices which vary depending on the time of day. This is achieved through the visualization of electricity consumption in 30 minute intervals over the internet.

* Home Energy Management System

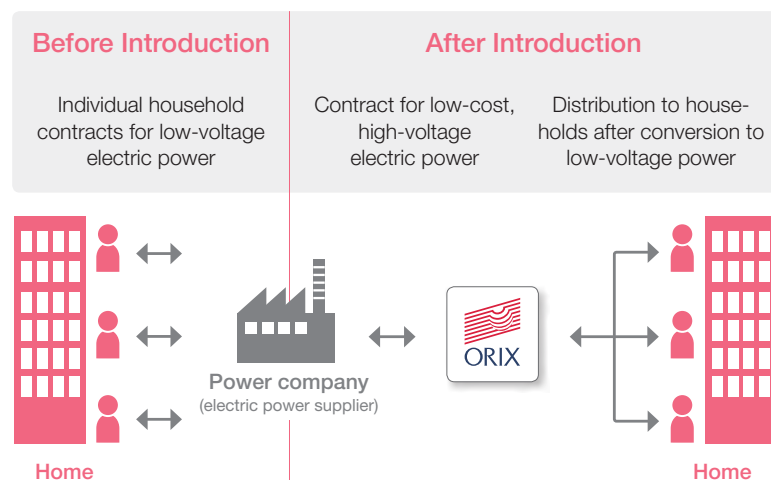


Image of EneVista customer webpage

Energy Conservation

The ORIX Group is helping customers to conserve power and cut costs through services such as ESCO and visualization of electricity consumption.

ESCO Services

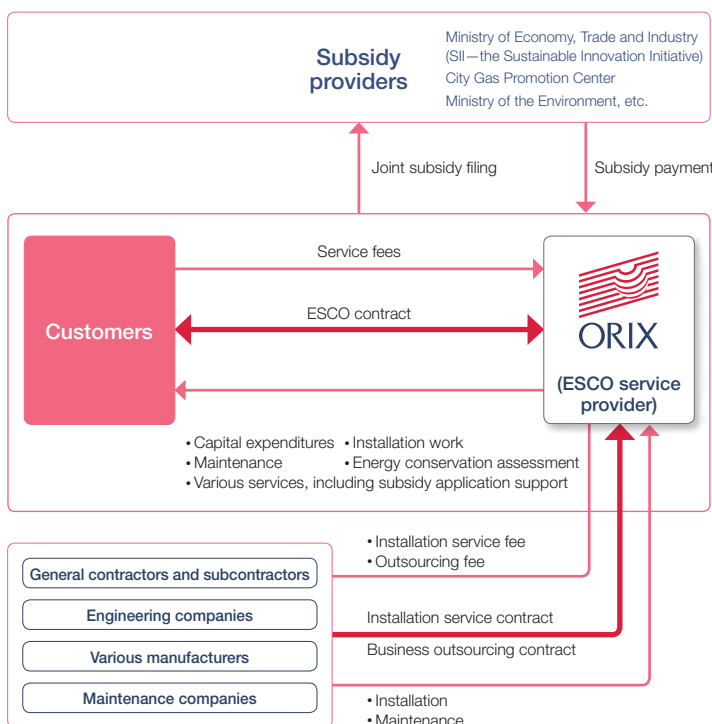
ORIX Corporation

Proposing ESCO services customized to the needs of various facilities, including factories, warehouses, commercial facilities and hotels

ESCO* are comprehensive services pertaining to energy efficiency in buildings, which achieve energy cost reduction without compromising the existing use of the building. Energy cost reductions attributable to ESCO services themselves cover various costs including the installation costs for energy-efficient equipment, maintenance costs and the cost of assessing the energy conservation benefits. Consequently, many private-sector companies and local governments are demanding ESCO services as a means of simultaneously conserving energy and reducing running costs.

ORIX offers one-stop services ranging from energy assessments that determine customer energy usage to the proposal and implementation of energy conservation solutions. ORIX also provides ESCO services customized to the needs of various facilities including factories, warehouses, commercial facilities and hotels. In order to maximize energy conservation benefits, ORIX selects the best equipment and items for the customer without being limited to a particular manufacturer. After installation, ORIX provides continuous support including operation and maintenance of equipment, energy conservation monitoring and verification, and operations consulting.

* Energy Service Company



CASE STUDY

20% Reduction in CO₂ emissions from a customer's head office plant compared with FY 2007 (fuel conversion project)

Mochida Pharmaceutical Plant Co., Ltd.

ORIX converted the fuel used at the head office plant of Mochida Pharmaceutical Plant, which is located in Otawara City, Tochigi Prefecture, from type A oil to low-environmental-impact liquefied natural gas (LNG) by installing an LNG satellite tank at the plant. With the head office plant accounting for 60% of the entire group's energy consumption, the site had the most urgent need for measures to reduce CO₂ emissions. Through this boiler fuel conversion project, the customer successfully reduced CO₂ emissions by 20% compared with FY2007. This project was selected as a subsidized project by the Ministry of the Environment.



LNG satellite tank introduced at Mochida Pharmaceutical Plant's head office plant

CASE STUDY

Effective energy use through installation of a co-generation system (distributed power generation project)

Nippon Kayaku Co., Ltd.

ORIX installed a co-generation system that simultaneously supplies electric power and heat at the Takasaki Plant of Nippon Kayaku, which has its headquarters in Chiyoda-ku, Tokyo. The new system was installed to reduce peak daytime electricity demand and as a power conservation measure. It is designed to make effective use of energy by generating electricity using a gas-fired turbine, and recovering the heat generated in the process as steam or hot water. The new system has helped the customer to reduce the amount of power purchased from electric power companies, and to cut CO₂ emissions. In addition it serves as a business continuity planning (BCP) measure.



Co-generation system installed at the Takasaki Plant

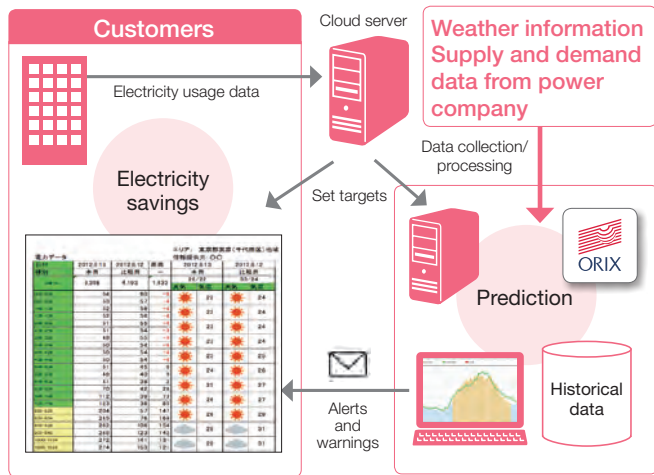
**“Hatto Watto”
Demand
Response
Service**
ORIX Corporation

Supporting the reduction of peak electricity demand and electricity use

ORIX’s “Hatto Watto” service supports the reduction of peak electricity demand and electricity consumption. Through this service, ORIX provides customers with an optimal power conservation plan by examining historical electricity usage data and reviewing electricity supply contracts as well as other conservation measures. In addition to providing electricity consumption and weather information in 30-minute intervals in real time over the Internet, “Hatto Watto” will also predict electricity consumption for the following day based on previous consumption patterns and the weather forecast. “Hatto Watto” alerts customers when they are close to exceeding planned use by sending an email warning before the planned amount has been exceeded.

ORIX covers the cost of all equipment and data transmission charges needed for this service and shares the cost savings derived from conserving power with customers. Customers can use this service without an initial investment, making it ideal for customers using between 100 kW and 500 kW of electricity. In this customer group, there is a need for electricity conservation but the introduction of BEMS* is not widespread.

* Building Energy Management System



C A S E S T U D Y

Introduction of “Hatto Watto” at an office building

Mitsubishi Paper Sales Co., Ltd.

The “Hatto Watto” service was introduced at Mitsubishi Paper Sales’ head office building in Chuo-ku, Tokyo. ORIX sets reduction goals for the building and offers information on predicted electricity consumption reflecting weather and other conditions as well as energy conservation advice. While monitoring electricity consumption data in real time on the service’s website, Mitsubishi Paper Sales is able to optimally conserve energy based on “Hatto Watto” energy conservation alerts and warnings.



Head office building of Mitsubishi Paper Sales

**Electricity
Visualization
and Automated
Control Services**
Ubiteq, INC.

Energy conservation solutions from the visualization of the amount of electricity in use to its automated control

BE GREEN Next (previously UGS) is an energy conservation service that makes the visualization of the amount of electricity in use and its automated control possible. This service links an office’s lighting, air-conditioning and security equipment to its IT systems. This service not only allows visualization of the amount of electricity in use but also provides automatic control functions including a function that allows lighting and air-conditioning to be shut down automatically in the event that energy use exceeds the upper limit predetermined by the customer.

ESCO Fund

ORIX Corporation

Proposing investment schemes limited to eco-friendly capital expenditure in partnership with regional financial institutions

ESCO Funds are investment schemes limited to eco-friendly capital expenditure. ORIX is able to meet the financing needs of customers by combining its ESCO services know-how with the locally based information networks of regional financial institutions. ORIX is teaming up with The Shiga Bank, Ltd., The Kiyo Bank, Ltd., The Bank of Fukuoka and other regional financial institutions to contribute to the stimulation of the local economy and the reduction of CO₂ emissions in local communities.

Storage Batteries

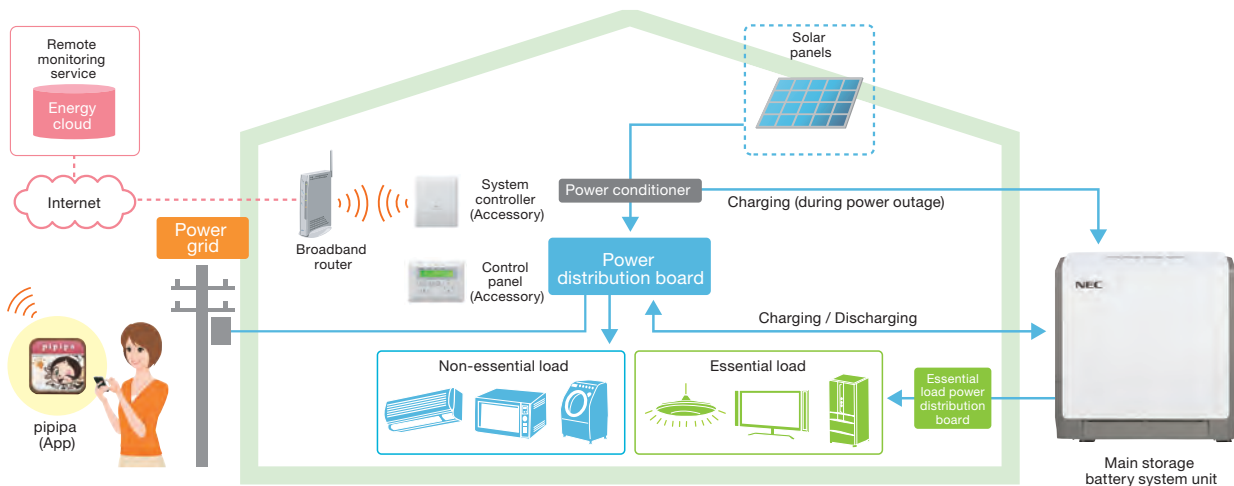
As the development of a diverse array of power sources including the use of renewable energy continues, the ORIX Group is contributing to the creation of a new lifestyle where electricity is stored efficiently and used wisely.

Storage Battery System Rental Service
ONE ENERGY CORPORATION

An energy service based on rental of fixed-storage battery systems for home use

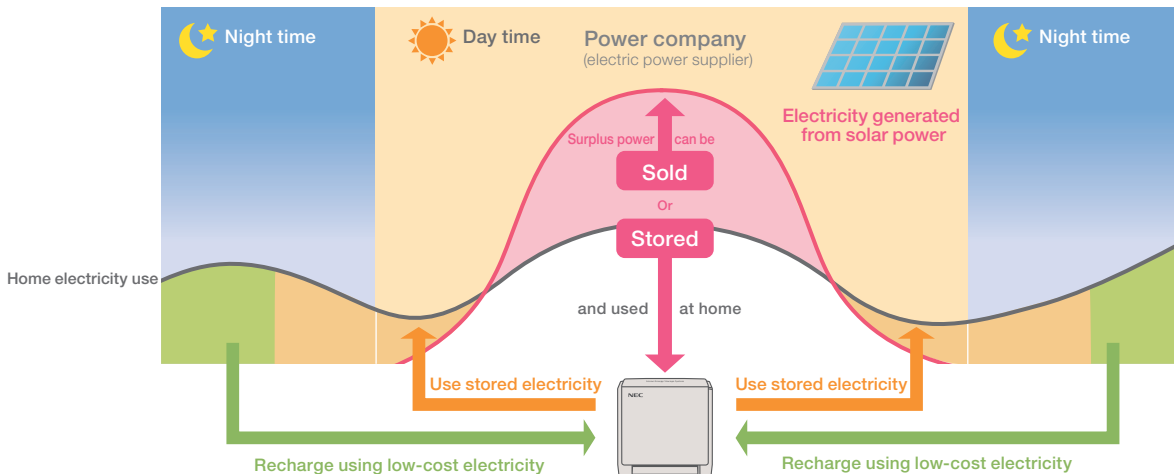
ONE ENERGY, a joint venture established by ORIX, NEC Corporation and EPCO Incorporated, is developing a home energy service combining storage battery rental and a smart house app. The service uses a cloud data link to connect NEC-made fixed-storage batteries (capacity 5.53 kWh) for home use (detached homes) with “pipipa”, a smart house app developed by EPCO. It is Japan’s first* energy service for home use where the entire system is provided as a rental. Besides serving as a source of electricity in emergencies, the service will help to reduce electricity use and peak daytime electricity demand through visualization of electricity use and providing optimal ways of using electricity.

* As of April 25, 2013, SVP JAPAN Co., Ltd. survey. For fixed-storage batteries for home use.



Furthermore, households can store or sell any surplus electricity generated through the combined use of storage batteries and a solar power system. When surplus electricity is stored, the household will aim for energy self-sufficiency by reducing the amount of power purchased from the electric power company. Even when surplus electricity is sold instead of stored, there is no double power generation*. This allows households to sell power on advantageous terms without any losses.

* Double power generation allows households to sell a greater amount of power by combining solar power systems with fuel cells or storage batteries for household use. A lower feed-in tariff rate has been set for double power generation, compared with power generated only by solar power systems.



Overseas

Capitalizing on know-how cultivated in the environment and energy business in Japan, ORIX is providing high-valued-added services in emerging markets particularly in Asia, where strong demand is anticipated.

Investment in Power Generation Company GBPC in the Philippines

ORIX has formed a strategic alliance with major commercial banking group the Metrobank Group in relation to energy-related business

ORIX formed a strategic alliance in the Philippines to jointly promote energy-related business with the Metrobank Group by acquiring from them 20% of issued shares in Global Business Power Corporation (GBPC), a Philippine power generation company.

GBPC is a power generation company based in the Visayas region, the central area of the Philippines where the islands of Panay and Cebu are located. As an independent power producer (IPP) focusing mainly on coal-fired power plants, GBPC has built a stable revenue base by owning and operating 9 power plants with a total installed capacity of 627 MW which supply base load electricity in the Visayas region. In the Philippines, demand for electricity is increasing in line with the country's population growth and economic development. For that reason, GBPC is also developing new power sources. While supporting GBPC's business expansion, ORIX will promote a broad range of businesses in the Philippines by leveraging its expertise in areas including power generation using renewable energy, electric power trading and energy saving-services developed in Japan.



Power Plant on Panay Island



Power Plant on Cebu Island

Acquisition of U.S. Energy Services Company Enovity

Expanding energy services business in Asia, based on U.S. know-how and technology

ORIX acquired 80% of the outstanding shares of U.S.-based energy management service company Enovity, Inc.

Enovity provides building energy management services, primarily in its core operating area of California, USA. In California, which is considered one of the most advanced energy services markets in the US, Enovity provides services for publically owned facilities, large office buildings and commercial facilities based on advanced know-how and technology which optimize energy costs at every stage of a building's lifecycle. This includes energy-saving building design, introduction of automated energy use management systems and providing facility operations and maintenance.

With the goal of preparing for higher energy prices in the future and reducing environmental impact, more and more companies are setting targets for energy consumption and CO₂ emission reduction. This is particularly the case among international companies from the U.S. and elsewhere that are expanding their businesses globally.

Looking ahead, it is expected that energy-saving measures will be implemented at production and business bases in Asia and other regions. In addition to supporting the expansion of Enovity in the U.S., ORIX aims to expand its environment and energy business in Asia by leveraging its overseas network and the expertise of Enovity.



Maintenance work on power generation facilities installed in an office building basement

Resources and Waste Business

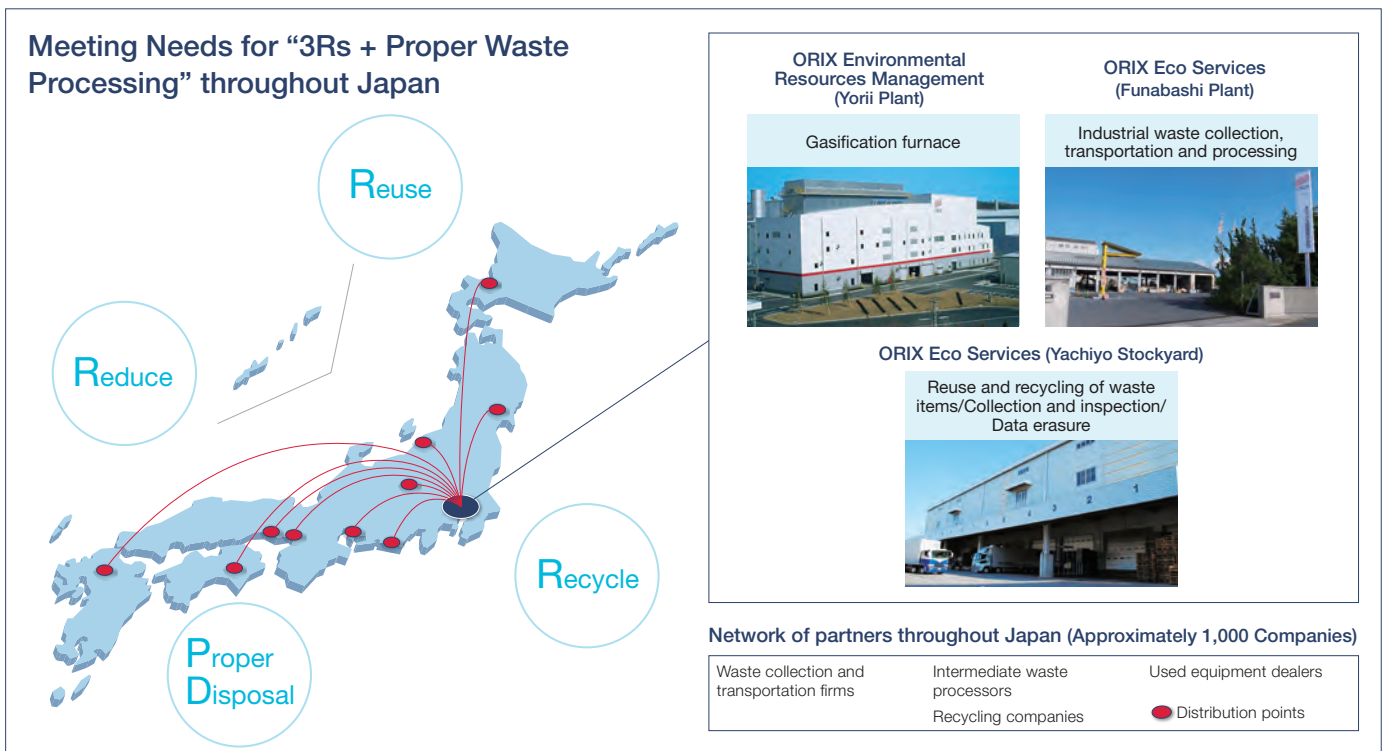
ORIX offers customers a one-stop service for all their 3R* and waste processing needs by leveraging the unique network and know-how cultivated through its leasing business.

* The "3Rs" stand for Reduce, Recycle and Reuse.

ORIX Group's "3Rs + Proper Waste Processing"

Leasing and rental are services which allow customers to reduce by providing a way of using equipment only as needed for as long as needed. At ORIX around 80% of the approximately 310,000 lease items which reach the end of their contract each year are re-leased. For the remaining items which are not re-leased ORIX Eco Services (OES) utilizes its unique logistics network to collect end-of-lease items from across Japan and prepare them for reuse or recycling*. Leveraging this network and expertise, ORIX is expanding its waste processing and recycling businesses.

* In the fiscal year ended March 31, 2013, approximately 97% of all end-of-lease items were reused or recycled. This figure was 99.9% for PCs and other office IT equipment.



Advanced Waste Processing Facility (Gasification Furnace)
ORIX Environmental Resources Management Corporation

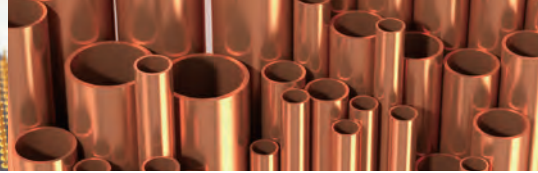
A facility that completely recycles waste with one of the largest waste processing capacities in Japan

ORIX Environmental Resources Management (OERM) operates a zero-emission* plant in the town of Yorii, Saitama Prefecture, through a private finance initiative with Saitama Prefecture. The plant utilizes the latest thermal decomposition and gasification methods. Its defining feature is that it melts waste at roughly 2,000°C, which enables all of the waste to be recycled. Recycled materials include slag and metals (which are recovered), and refined syngas which is used as fuel for highly-efficient power generation at an onsite generator. OERM has voluntarily set dioxin limits for the site at one-tenth the legal limit and is utilizing this advanced system to keep dioxin emissions to a minimum. The plant can process 450 tons of waste daily and is one of the largest private-sector facilities in Japan in terms of processing volume. In addition to industrial waste from factories and offices, many local governments use the plant to process general waste, including household waste.

* Zero-emission refers to recycling resources by making effective use of all waste as raw material without emitting any unusable waste.



High-temperature reactor that melts waste



Nationwide Recycling System

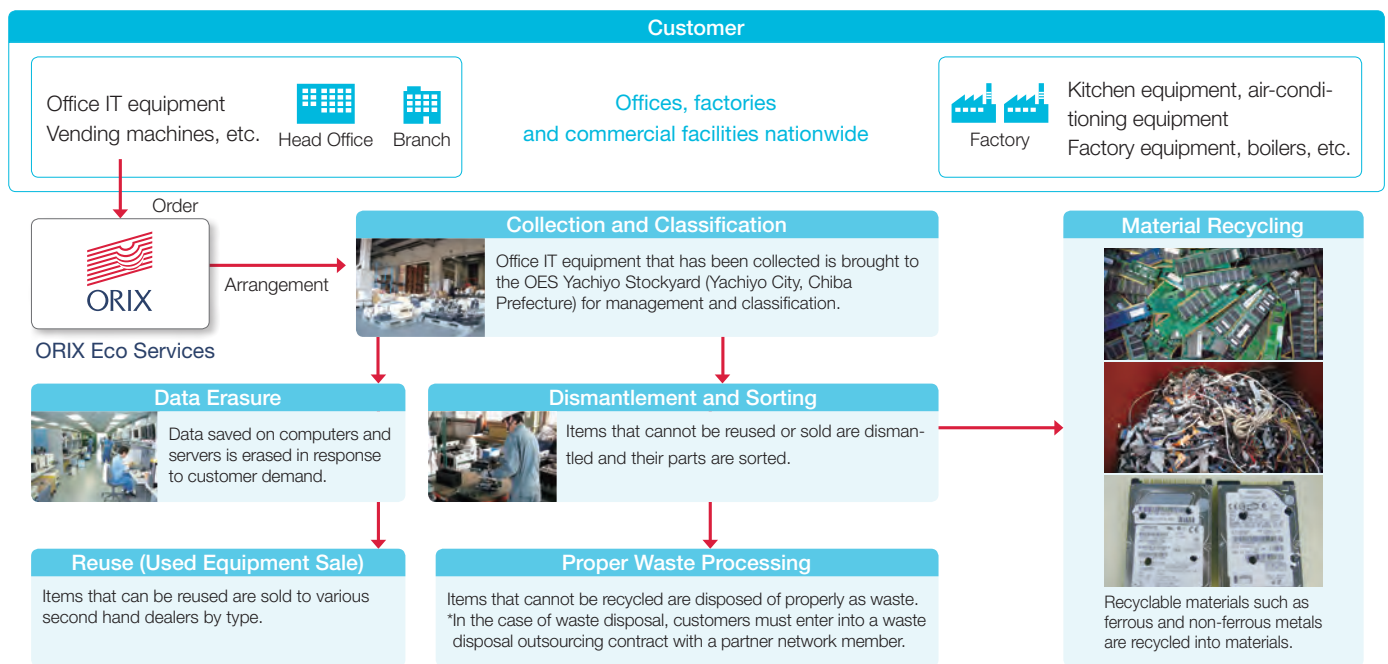
ORIX Eco Services Corporation

A nationwide network supporting the processing of waste items

OES has built a nationwide network that allows it to offer integrated support for recovering waste items and prepare them for reuse, recycling or proper disposal through a Nationwide recycling system. OES supports the disposal of waste items from customers with offices throughout Japan and works to prevent the incorrect disposal of waste by providing the same quality of collection and recycling across Japan and by selecting processing companies, arranging transportation, appraising items to be sold, proposing cost reduction measures and managing all the paperwork associated with proper waste disposal in one place.

In addition, by leveraging the ability to discern the value of metal waste honed at its intermediate metal waste processing facility (Funabashi Plant), OES is developing a metal recycling business by collecting valuable metal resources from discarded office IT equipment and machinery. OES also plays the role of a metal trading company and metal processor which supplies ferrous and non-ferrous metals collected nationwide as materials to the recycling market.

Process of Collecting, Reusing, Recycling and Properly Disposing of Waste Items



Metal Waste Processing Facilities

ORIX Eco Services Corporation

An intermediate processing facility primarily handling metal waste from office IT equipment and machinery, etc.

OES operates an intermediate metal waste processing facility (Funabashi Plant) in Funabashi City, Chiba Prefecture.

The facility conducts integrated operations ranging from the recovery of items containing metal, such as machinery, that are discarded in the Kanto region, to the storage, primary processing and creation of recycled materials. The facility promotes high added value by carefully sorting high-quality metal materials. In addition to sorting, pulverizing and compacting operations, the facility also plans to start operating a shredder with a high processing capacity in 2014 with the aim of becoming an operation that can carry out even more advanced metal processing.



Scrap metal compactor



Office IT equipment stockyard

Other Eco Services

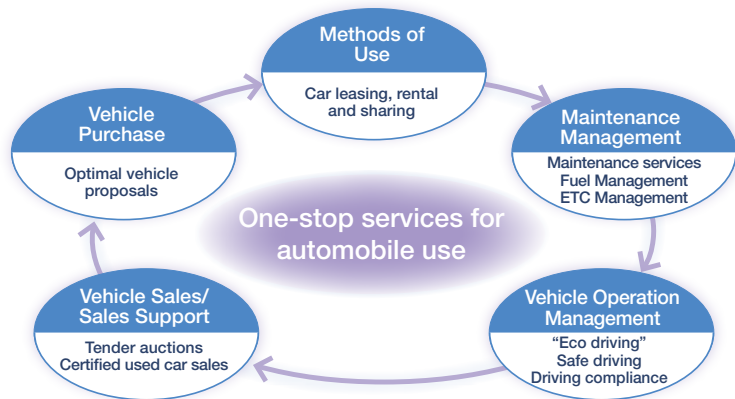
The ORIX Group is working to meet customer needs by offering a variety of eco services that leverage its specialized expertise.

One-stop Eco-friendly Services for Automobiles

ORIX Auto Corporation

With the largest vehicle fleet in Japan's auto leasing sector and roughly 1 million* vehicles under its management, ORIX Auto proposes the most effective use of vehicles by combining a wide variety of services according to customer use needs including car leasing, rental, and sharing. ORIX Auto provides comprehensive services that help to reduce environmental impact and CO₂ emissions, as well as foster environmental awareness throughout a vehicle's lifecycle. This includes everything from maintenance services needed to keep a vehicle running to telematics services that promote eco-friendly driving ("eco driving") and vehicle disposal.

* As of March 31, 2013



ORIX Rent-A-Car Naha Airport branch

Car Rental and Car Sharing (EV and HV)

ORIX Auto provides 124* electric vehicles (EV) and 3,219* hybrid vehicles (HV) for car rental and car sharing across Japan. In addition, certain locations have begun renting electric-assisted bicycles as part of the "e-bike" electric-assisted bicycle rental business.

* As of March 31, 2013

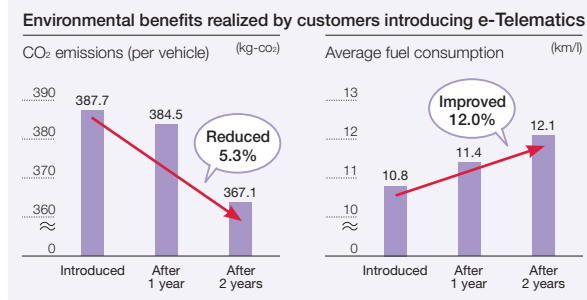


Maintenance Services

ORIX Auto contributes to higher fuel efficiency and lower CO₂ emissions by performing oil change and refill as required and also checking tire air pressure as part of regular vehicle maintenance inspections. In addition, ORIX Auto also works to limit resource consumption by using recycled parts when replacing parts on damaged vehicles.

ORIX "e-Telematics" Service

ORIX Auto's telematics service, "e-Telematics," is a consulting service that is comprised of compliance, environmental, and safety aspects. This service enables customers to visualize their vehicle's operational status by installing specialized equipment on board. By providing a consulting service encompassing operational methods to verify efficiency, ORIX Auto offers one-stop support for optimal use of vehicles, proper work management, traffic accident prevention and CO₂ emission reduction.



Used-Auto Leasing and Sales

From among cars that have been returned upon leasing contract expiration or that have completed their useful lives in rental operations, only those vehicles that satisfy our own stringent standards are sold as "ORIX Certified Used Cars". ORIX Auto supplies reliable used cars at reasonable prices via nine ORIX U-car stores nationwide and over the Internet.

Further, to enable customers to make use of used cars more readily, ORIX Auto also offers a "One Price Used Car Lease," that provides customers with a choice of different monthly payments and types of vehicle.



ORIX Certified Used Cars



Contract Testing Services for Renewable Energy-related Equipments

ORIX Rentec Corporation

ORIX Rentec provides performance evaluations and reliability testing services for renewable energy-related products and components on a contract basis at its Kobe Testing Center. Services available include solar panel performance evaluation and reliability testing, and storage battery charging and discharging tests. Moreover, by providing testing laboratories and equipment to customers for a fixed period of time, customers can perform their own tests and inspections freely in an environment where information security is assured.



Charging and discharging testing equipment



X-ray observation equipment

Environment-related Equipment Rental

ORIX Rentec Corporation

ORIX Rentec rents power generators and portable storage batteries that can be used as power supplies during disasters and other times of emergency, for as little as one day. ORIX Rentec supports customer environmental measurement requirements through its rental services by providing a range of equipment. This equipment includes equipment to measure PM2.5 atmospheric fine particulate matter used by local governments across Japan, as well as radiation measurement equipment used by food processors and distributors.



Measurement Equipment (PM2.5)



Food radiation measurement equipment

Sale of Rental Equipment and Purchase of Used Equipment

ORIX Rentec Corporation

ORIX Rentec sells high-quality used rental equipment that has undergone maintenance directly to customers through its expansive network which includes regular auctions targeting used equipment dealers, its own branches and the Internet. It also provides a purchasing service which inspects and buys equipment that customers no longer need.

Environmentally Friendly Loan Guarantees

ORIX Corporation

ORIX provides environmentally friendly loan guarantees to regional financial institutions. Under this system, regional financial institutions offer preferential treatment on loan conditions according to the environmental concern rating system established by ORIX. Through this system, ORIX is helping to foster environmental awareness among companies and support for their environmental initiatives.

Sale of Tradable Green Power Certificates

ORIX Corporation

ORIX sells tradable green power certificates that represent certified electric power generated through the use of wood chips as biomass fuel at the Agatsuma Biomass Power Plant (see page 7).

Logo for Tradable Green Power Certificates issued by Agatsuma Bio Power



Carbon Offset Service / Sales of Carbon Credits

ORIX Corporation

As a carbon offset provider, ORIX offers a range of support. This support includes everything from making proposals when customers develop carbon offset products to calculating CO₂ emissions and procuring and managing credits (emissions rights). ORIX also issues carbon offset certificates and sells emissions rights in the form of carbon credits.

ORIX's carbon offset services logo



Support for the Introduction of Low-Carbon Equipment (Eco-lease)

ORIX Corporation

The Ministry of the Environment is promoting the "FY2013 Eco-Lease Promotion Project for Households and Corporations" which subsidizes 3% or 5% of the overall leasing fee for small and medium-sized businesses (and others) who wish to introduce low-carbon equipment using leasing (In Iwate, Miyagi and Fukushima prefectures subsidies may cover up to 10%). As a designated provider of these leases, ORIX assists customers with the installation of low-carbon equipment.

Eco-Friendly Real Estate Business

In addition to developing eco-friendly real estate, including residences, office buildings, commercial facilities, logistics centers and other properties with excellent environmental performance, ORIX is also actively involved in reducing the environmental impact posed by facilities under its management, such as hotels and golf courses. While taking steps to make buildings more energy efficient and reduce CO₂ emissions, ORIX is helping to build a recycling-based society in harmony with nature.

Logistics Centers

Eco-Friendly Logistics Centers

With many companies facing the task of reducing their environmental impact, there is growing demand from companies moving into logistics centers as tenants for energy conservation measures. ORIX Real Estate is taking steps to address the environmental concerns of these companies through initiatives including the introduction of solar power systems and placing greenery along outer walls.

Tokorozawa Logistics Center, Iwatsuki Logistics Center, Kawagoe II Logistics Center and Inuyama Logistics Center which were completed in 2013 were all awarded CASBEE* Class A Ratings.

* CASBEE is an acronym for Comprehensive Assessment System for Built Environmental Efficiency. CASBEE is a system for objectively ranking the environmental performance of a building.



The Iwatsuki Logistics Center (Awarded CASBEE Saitama Prefecture Class A Rating)

Office Buildings

Office Buildings Employing Environmental Impact Reducing Technology

The ORIX Group's Osaka Headquarters (ORIX Honmachi Building) was built with concern for the environment in mind. To start with the old building's framework was reused. Further, tall trees and other greenery were placed within the building's grounds and on its roof. In addition, a solar power system, a high-efficiency low-maintenance multi-airconditioning system utilizing heat pumps and a lighting efficiency system utilizing LED were also installed. By using natural lighting, reusing water resources, installing BEMS and other environmental impact reduction technologies which contribute to the conservation of energy and CO₂ emissions at the construction stage, the building was awarded CASBEE Osaka Class S Rating which is the highest rating available. This led to the ORIX Honmachi Building receiving the "FY2011 CASBEE Osaka Building of the Year Award". Further, some of the technology used in the ORIX Honmachi Building has been recognized by the Ministry of the Environment in its "Cool City Center Pilot Project".



ORIX Honmachi Building (Awarded CASBEE Osaka Class S Rating)

Homes

Homes Utilizing Solar Power Systems and Bulk Electric Power Purchasing Service

Sanctus Yono located in Saitama City, Saitama Prefecture, has greenery covering most of the walls within its grounds. It is both economically sound and environmentally friendly thanks to the installation of a solar power system on the roof of the complex and the adoption of ORIX Electric Power's Bulk Electric Power Purchasing Service (see page 8). Further, by utilizing insulated glass on all the outward facing windows, Sanctus Yono has been awarded "Housing Performance Indication Standard Level 4 for Energy Conservation Measures" (highest level) meaning that the building has a highly insulated and airtight design.



Greenery covers most of the walls of Sanctus Yono (Awarded CASBEE Saitama Class A Rating) Completed Image

Aquariums

(Enoshima Aquarium, Kyoto Aquarium and Sumida Aquarium)

ORIX Real Estate has been involved in the operation of the Enoshima Aquarium as a Private Finance Initiative (PFI) with Kanagawa Prefecture since 2004. In 2012, it opened Kyoto Aquarium and the Sumida Aquarium that it operates directly. While conducting environmentally friendly facility and project management, these facilities not only contribute to the development of the surrounding area as leisure spots but also provide customers with a place to study the environment. By combining entertainment and education, ORIX Real Estate has created "Edu-tainment" Aquariums.



* Enoshima Aquarium is a joint project between the ORIX Group and Enoshima Marine Corporation.



Large-scale tank in the Kyoto Aquarium using artificial seawater



ORIX Theater

ORIX renovated the former Osaka Welfare Pension Hall into a multi-purpose facility while preserving the traditional facade. It also utilizes a solar power system.



Kyocera Dome Osaka

This arena uses rain water for toilets and to water plants. The arena utilizes ventilation methods to naturally ventilate the arena which are similar to breezes.



Golf Courses

Aiming for operations with a low environmental impact, ORIX is working to reduce CO₂ emissions at Group golf courses by upgrading air-conditioning, water-heating equipment and night-time golf facilities, as well as switching to LED lighting. In addition, golf course grass cuttings are converted into fertilizer for use on plants on courses, and a mega-solar project is being constructed on disused land at the Deer Lake Country Club (Kanuma City, Tochigi Prefecture).



ORIX Group Eco Activities

SANGO ORIX – Okinawa Coral Reef Restoration Project



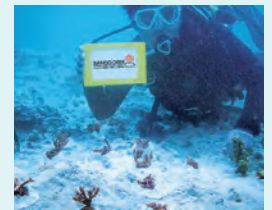
In 2008, ORIX Real Estate launched “SANGO ORIX”, a project to restore Okinawa’s coral reefs with the aim of protecting Okinawa’s coral reefs abundant capacity to sustain biodiversity and pass pristine oceans on to future generations. At present, the project is planting coral off the shores of Okinawa.

In partnership with Sea Seed, LLC and Okiden Kaihatsu Company, Inc., ORIX is continuing its activities to protect and restore Okinawa’s coral reefs. This includes conducting surveys to monitor and confirm the growth of the coral reefs. By July 2013, ORIX had successfully transplanted 6,800 coral seedlings of the total 10,000 scheduled.

ORIX Golf Management supports the SANGO ORIX project by collecting donations from customers at all the facilities it manages and by donating funds raised by collecting and recycling lost golf balls.

Meanwhile, ORIX Auto has teamed up with Pam, Inc., which operates “Okinawa Tour Land”, a reservation site for travel in Okinawa to support the SANGO ORIX project by donating part of the sales revenues generated from hybrid car rentals reserved through the site.

Further, in March 2013, the ORIX Foundation conducted a “Coral Restoration Program for Children” in Urasoe City, Okinawa Prefecture. 46 children from child welfare facilities in Okinawa Prefecture participated in this program to learn about the importance of Okinawa’s coral reefs through the experience of making coral seedlings for transplantation based on the theme of “What is a coral reef? Let’s take part in coral reef restoration”.



Coral Transplantation

Enosui ECO

The Enoshima Aquarium, located in Fujisawa City, Kanagawa Prefecture, is pursuing its own form of environment activities called “Enosui ECO”. Enosui ECO is comprised of both Ecology (study of animal habitats) and Eco-Action (environment-related activities). The aquarium provides a place to learn about animal habitats in a fun way and includes exhibits explaining the biodiversity and ecosystems of the Sagami Bay and hands-on events observing

and investigating tide pool organisms and jellyfish. Further, an Enosui ECO Day is held on the third Sunday of every month. On this day the aquarium conducts activities including beach cleaning and collection of bottle caps for the “Ecocap” Movement.



Beach cleaning activities conducted on Enosui ECO Day

Hotel Waste Food Recycling Project

Food recycling projects are being carried out at the Suginoi Hotel, located in Beppu City, Oita Prefecture, and the Blue Ridge Hotel, located in Toyooka City, Hyogo Prefecture. All food waste generated by these hotels is collected and converted to fertilizer by local partners. This fertilizer is used in the production of agricultural produce which the hotels then buy to improve their food waste recycling rate.





Answers, Custom Fit.

At ORIX Group, certain things are naturally inherited, regardless of the passage of time or personnel changes. One of these unchangeable factors is our approach to “breakthroughs.” It is our innate approach to think through a problem to provide an answer that matches our clients’ needs.

We share this approach with all customers, and it is manifested in our brand slogan, “Answers, Custom Fit.”

Contact

Corporate Communications Department
ORIX Corporation
World Trade Center Building., 2-4-1 Hamamatsu-cho,
Minato-ku, Tokyo, 105-6135, Japan
TEL: +81-3-3435-3167
Homepage: <http://www.orix.co.jp/grp/en/>

