



Beppu SUGINOI HOTEL

New Niji Kan Building to Open on July 1, 2021

~Reservations accepted from April 8~

TOKYO, Japan - April 8, 2021 - ORIX Real Estate Corporation ("ORIX Real Estate") announced that it has completed construction work on a new building*¹ named "Niji Kan" at Beppu SUGINOI HOTEL. Operated under the ORIX HOTELS & RESORTS business brand, Beppu SUGINOI HOTEL is currently undergoing large-scale renovations*² which are slated for completion in 2025.

Niji Kan will open for business on July 1, 2021. Reservations are being accepted from today on the official hotel website: <https://www.suginoi-hotel.com/english/>



Niji Kan



Loft Room

Niji Kan, which means "rainbow building" in Japanese, was inspired by the beautiful colors of rainbows, which are symbols of hope and which cause anyone who sees them to smile. The designs of the guest rooms take as their themes Beppu's seas, mountains, and blooming flowers, and incorporate chromatic furniture and decor in red, orange, green, blue, and other colors.

The building itself stands eight floors high, and adjoins the hotel's AQUABEAT indoor pool. The second to eighth floors house a total of 155 guest rooms, with space for between two and four people per room. There are a total of five different types of guest rooms: in addition to twin rooms, double rooms, and universal rooms, Niji Kan also offers duplex-style loft rooms and family rooms fitted with bunk beds—these latter two are the first of their kind at Beppu SUGINOI HOTEL.

The first-floor lobby lounge features automated check-in machines for swift, contactless check-ins, as well as lockers where guests can store their luggage before checking in for added convenience. In line with opening of the Niji Kan, AQUABEAT will also recommence operations on July 1, enabling families with children and groups of friends to enjoy exciting, resort-like stays.

The Beppu SUGINOI HOTEL logo has also been revamped.

ORIX Real Estate will continue to develop diverse ideas, and operate facilities that deliver the culture and charm of local communities to its guests.

*¹ [ORIX Real Estate to Begin Construction of New Building at Beppu Suginoi Hotel](#) (October 7, 2019).

*² [ORIX Real Estate to Begin Large-scale Renovations of Beppu Suginoi-Hotel](#) (June 12, 2019).

1. About the Niji Kan name and logo, and the new Beppu SUGINOI HOTEL logo

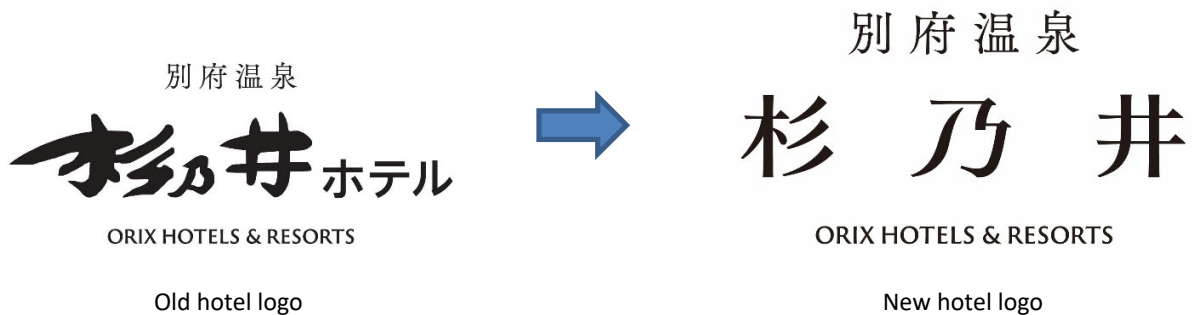
The new building has been named “Niji Kan” for its beautiful colors and its role as a symbol of hope. In order to increase its approachability, the Niji Kan logo makes use of a rounded, sophisticated, yet gentle design.

As part of the large-scale renovations, the hotel logo itself has also been revamped. The new hotel logo incorporates a “swaying motif” in the Chinese character for the “NO” of “SUGINOI.” This expresses the warmth and water of its hot springs, and encapsulates the uniqueness of the hotel. The new logo will gradually be used throughout the hotel, beginning with the Niji Kan entrance and the official hotel website.

* The new hotel logo will gradually replace the old logo; for this reason, for a short time both the new and old logos will be in use simultaneously.

杉 乃 井
虹 館

NIJI KAN
Niji Kan logo



2. Lobby

To avoid queues when checking in and out, Niji Kan is equipped with automated check-in machines, which guests can use to carry out check-in procedures themselves.

In addition, lockers are located near the entrance for the sake of guests who wish to leave their luggage and use AQUABEAT or Tanayu before checking in; lockable chains are also available for suitcases. The lockers can be used free of charge at all times for guests staying at Niji Kan.



Concept image of Niji Kan lobby lounge

3. Guest rooms

Niji Kan is home to a total of 155 rooms, with the majority boasting a floor space of approximately 21 m². Guests staying at Niji Kan are permitted to use all of the hotel's existing facilities, including the Ceada Palace buffet-style restaurant, the Tanayu open-air hot spring with magnificent views of Beppu Bay, and the Aqua Garden open-air swimwear hot spring.

Loft rooms

Loft rooms are ideal for families with small children and groups of friends on holiday; the lower floors are fitted with televisions and facing day-beds, where guests can relax and play together. The guest room interiors are decorated in a colorful manner appropriate to Niji Kan, creating a casual yet exciting space.



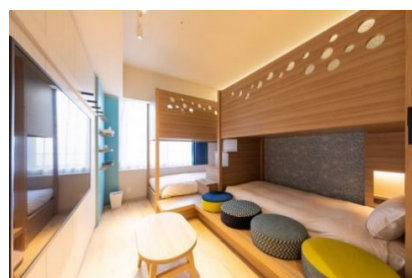
Twin rooms

The use of wall-stored chairs and tables results in greater comfort and a more expansive feel. The rooms are also equipped with beds measuring 1,400 mm or 1,600 mm, so that parents can sleep together with small children in comfort and safety.



Family rooms

The lower bunks of the bunk beds can be used for relaxing and playing together, making the rooms suitable both for families and groups of friends. The sides of the upper bunks have been heightened for enhanced safety and privacy.



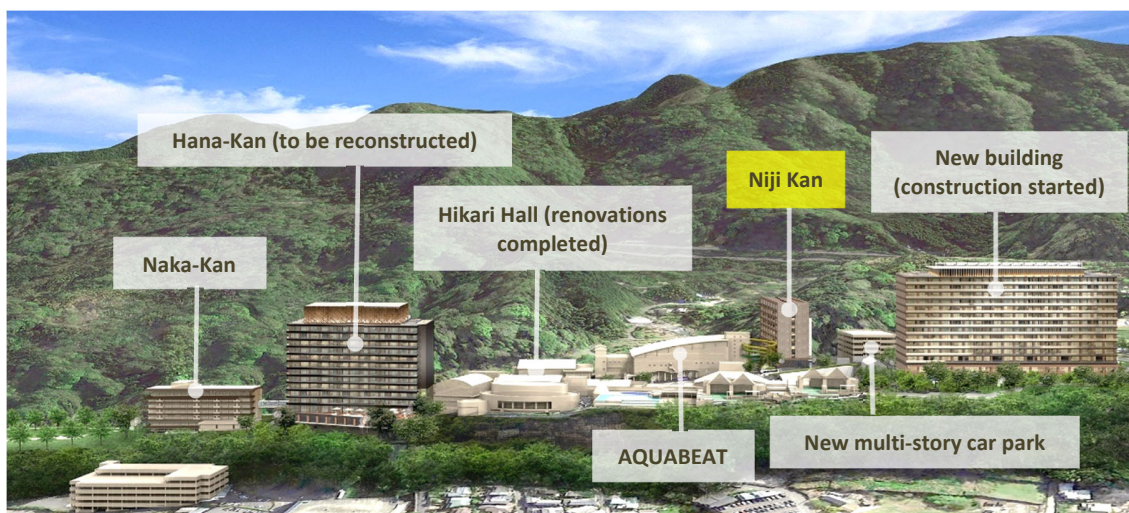
Loft rooms	21 m ²	29 rooms
Twin rooms	21 m ²	91 rooms
Family rooms	21 m ²	11 rooms
Double rooms	21 m ²	22 rooms
Universal rooms	33 m ² (includes bathrooms)	2 rooms

4. Overview of Niji Kan reservations

- Reservation start date: April 8, 2021
- Period of stay: July 1–September 30, 2021
- Room types: 1. Loft rooms; 2. Twin rooms; 3. Family rooms; 4. Double rooms; 5. Universal rooms
- Prices: 1. From 19,100 yen; 2. From 15,800 yen; 3. From 19,100 yen; 4. From 15,800 yen; 5. From 15,800 yen
 - * Prices are per person, for two people sharing one room, including dinner and breakfast; prices include consumption tax and service charges; bath tax applies separately.
- Reservation methods: Official hotel website: <https://www.suginoi-hotel.com/english/>
Telephone reservations: 0977-78-8888
 - * Telephone reservations are accepted from 9:00 a.m. to 6:00 p.m.
 - * Reservations for stays in October 2021 and later will be accepted when preparations are complete.
 - * The above information is correct as of April 8, 2021. Prices and other information are subject to change. For further details, please visit the official hotel website.
 - * In accordance both with the Ministry of Health, Labor and Welfare’s “New Lifestyles,” and with industry group guidelines such as the “Guidelines for Accommodation Facilities to Combat the New Coronavirus,” ORIX Real Estate has formulated and implemented its own “With COVID-19’ Operation and Service Policies (Cleanliness Policy).”

5. Overview of Niji Kan

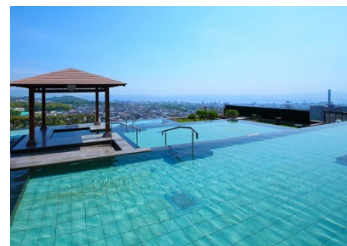
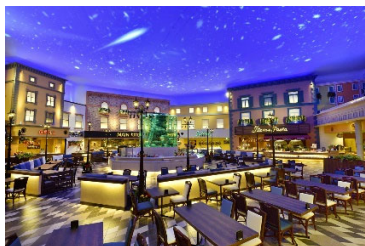
Address	1 Kankaiji, Beppu, Oita
Site area	2,024.00 m ²
Total floor space	6,052.25 m ²
Guest rooms	155
Design	MHS Planners, Architects & Engineers Ltd.
Construction	KAJIMA CORPORATION
Start of construction	November 26, 2019
Completion of construction	March 31, 2021
Opening	July 1, 2021



Concept image of the hotel after completion of the large-scale renovations

6. Overview of Beppu SUGINOI HOTEL

Address	1 Kankaiji, Beppu, Oita
Guest rooms	647
Hot springs	Tanayu, an open-air hot spring with a magnificent view, and one other open-air hot spring
Dining facilities	6 restaurants and bars (buffet restaurant, Japanese restaurant, Italian restaurant, tea lounge, etc.)
Other facilities	The Aqua Garden; AQUABEAT; a bowling alley; a games corner; etc.
Access	5 minutes by car from the Beppu Interchange on the Higashi Kyushu Expressway 10 minutes by car from JR Beppu Station (a free shuttle bus operates between the hotel and the West Exit of JR Beppu Station) 20 minutes by car from Beppu International Tourism Port 45 minutes by car from Oita Airport
Operating company	Suginoi Hotel And Resort Co., Ltd. (a wholly owned subsidiary of the ORIX Group)
Telephone	0977-24-1141
Fax	0977-21-0010
Website	https://www.suginoi-hotel.com/english/



Contact Information:

Investor Relations and Sustainability Department
ORIX Corporation
Tel: +81-3-3435-3121

About ORIX:

ORIX Corporation (TSE: 8591; NYSE: IX) is a financial services group which provides innovative products and services to its customers by constantly pursuing new businesses.

Established in 1964, from its start in the leasing business, ORIX has advanced into neighboring fields and at present has expanded into lending, investment, life insurance, banking, asset management, automobile related, real estate and environment and energy related businesses. Since entering Hong Kong in 1971, ORIX has spread its businesses globally by establishing locations in 34 countries and regions across the world.

Going forward, ORIX intends to utilize its strengths and expertise, which generate new value, to establish an independent ORIX business model that continues to evolve perpetually. In this way, ORIX will engage in business activities that instill vitality in its companies and workforce, and thereby contribute to society. For more details, please visit our website: <https://www.orix.co.jp/grp/en/>
(As of September 30, 2020)

Caution Concerning Forward Looking Statements:

These documents May contain forward-looking statements about expected future events and financial results that involve risks and uncertainties. Such statements are based on our current expectations and are subject to uncertainties and risks that could cause actual results that differ materially from those described in the forward-looking statements. Factors that could cause such a difference include, but are not limited to, those described under “Risk Factors” in the Company’s annual report on Form 20-F filed with the United States Securities and Exchange Commission and under “(4) Risk Factors” of the “1. Summary of Consolidated Financial Results” of the “Consolidated Financial Results April 1, 2019 – March 31, 2020.”